

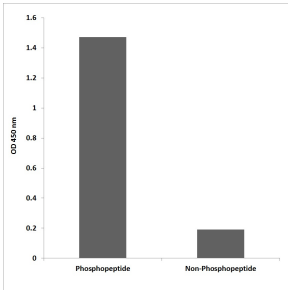
Anti-TAL-1 (phospho Ser122) Antibody (A94807)

Specifications:

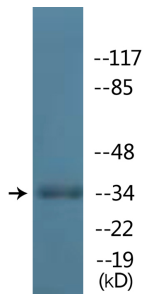
Name:	Anti-TAL-1 (phospho Ser122) Antibody
Description:	Rabbit polyclonal antibody to TAL-1 (phospho Ser122).
Specificity:	This antibody detects endogenous levels of TAL1 only when phosphorylated at Ser122.
Applications:	WB, ELISA
Recommended Dilutions:	WB: 1:500-1:1000, ELISA: 1:1000
Reactivity:	Human, Mouse
Immunogen:	Synthetic phospho-peptide derived from human TAL-1 around the phosphorylation site of Ser122.
Host:	Rabbit
Clonality:	Polyclonal
Isotype:	IgG
Conjugate:	Unconjugated
Purification:	Purified from rabbit serum by antigen affinity chromatography using the immunizing phospho peptide.
Molecular Weight:	34kDa
Product Form:	Liquid
Formulation:	Supplied in Phosphate Buffered Saline (without Mg ²⁺ and Ca ²⁺), pH 7.4, with 150mM NaCl, 0.02% Sodium Azide, and 50% Glycerol.
Storage:	Shipped at 4°C. Upon delivery aliquot and store at -20°C. Avoid freeze / thaw cycles.
Disclaimer:	This product is for research use only. It is not intended for diagnostic or therapeutic use.

Anti-TAL-1 (phospho Ser122) Antibody (A94807)

Images:



ELISA for immunogen phosphopeptide (left) and non-phosphopeptide (right) using Anti-TAL-1 (phospho Ser122) Antibody.



Western blot analysis of lysates from Jurkat cells treated with PMA 125ng/ml 30' using Anti-TAL-1 (phospho Ser122) Antibody.