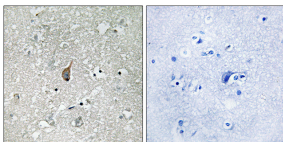


Anti-APC1 (phospho Ser355) Antibody (A94835)

Specifications:

Name:	Anti-APC1 (phospho Ser355) Antibody
Description:	Rabbit polyclonal antibody to APC1 (phospho Ser355).
Specificity:	This antibody detects endogenous levels of APC1 only when phosphorylated at Ser355.
Applications:	IHC, ELISA
Recommended Dilutions:	IHC: 1:50-1:100, ELISA: 1:1000
Reactivity:	Human, Mouse
Immunogen:	Synthetic peptide derived from human APC1 around the phosphorylation site of Ser355 (amino acids 321-370).
Host:	Rabbit
Clonality:	Polyclonal
Isotype:	IgG
Conjugate:	Unconjugated
Purification:	Purified from rabbit serum by antigen affinity chromatography using the immunizing phospho peptide.
Molecular Weight:	216kDa
Product Form:	Liquid
Formulation:	Supplied in Phosphate Buffered Saline (without Mg ²⁺ and Ca ²⁺), pH 7.4, with 150mM NaCl, 0.02% Sodium Azide, and 50% Glycerol.
Storage:	Shipped at 4°C. Upon delivery aliquot and store at -20°C. Avoid freeze / thaw cycles.
Disclaimer:	This product is for research use only. It is not intended for diagnostic or therapeutic use.

Images:



Immunohistochemical analysis of paraffin-embedded human brain using Anti-APC1 (phospho Ser355) Antibody. The right hand panel represents a negative control, where the antibody was pre-incubated with the immunising peptide.