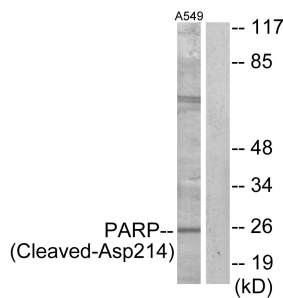


## Anti-PARP (cleaved Asp214) Antibody (A94925)

### Specifications:

Name:	Anti-PARP (cleaved Asp214) Antibody
Description:	Rabbit polyclonal antibody to PARP (cleaved Asp214).
Specificity:	This antibody detects endogenous levels of fragment of activated PARP resulting from cleavage adjacent to Asp214.
Applications:	WB, ELISA
Recommended Dilutions:	WB: 1:500-1:1000, ELISA: 1:20000
Reactivity:	Human, Mouse
Immunogen:	Synthetic peptide derived from human PARP (amino acids 165-214).
Host:	Rabbit
Clonality:	Polyclonal
Isotype:	IgG
Conjugate:	Unconjugated
Purification:	Purified from rabbit serum by antigen affinity chromatography using the immunizing peptide.
Molecular Weight:	24kDa
Product Form:	Liquid
Formulation:	Supplied in Phosphate Buffered Saline (without Mg <sup>2+</sup> and Ca <sup>2+</sup> ), pH 7.4, with 150mM NaCl, 0.02% Sodium Azide, and 50% Glycerol.
Storage:	Shipped at 4°C. Upon delivery aliquot and store at -20°C. Avoid freeze / thaw cycles.
Disclaimer:	This product is for research use only. It is not intended for diagnostic or therapeutic use.

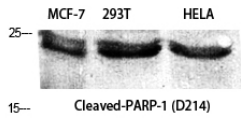
### Images:



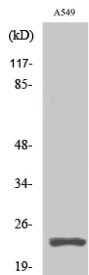
Western blot analysis of lysates from A549 cells, treated with etoposide 25uM 24h using Anti-PARP (cleaved Asp214) Antibody. The right hand lane represents a negative control, where the antibody is blocked by the immunising peptide.

## Anti-PARP (cleaved Asp214) Antibody (A94925)

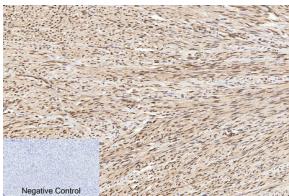
Images continued:



Western blot analysis of various cells using Anti-PARP (cleaved Asp214) Antibody.



Western blot analysis of A549 cells using Anti-PARP (cleaved Asp214) Antibody.



Immunohistochemical analysis of paraffin-embedded human uterus tissue using Anti-PARP (cleaved Asp214) Antibody at 1:200 (4°C overnight). Negative control was secondary antibody only.