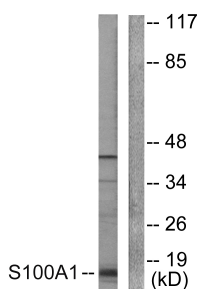


Anti-S100 A1 Antibody (A94966)

Specifications:

| | |
|------------------------|--|
| Name: | Anti-S100 A1 Antibody |
| Description: | Rabbit polyclonal antibody to S100 A1. |
| Applications: | WB, IHC, IF, ELISA |
| Recommended Dilutions: | WB: 1:500-1:1000, IHC: 1:50-1:100, IF: 1:100-1:500, ELISA: 1:20000 |
| Reactivity: | Human, Mouse, Rat |
| Immunogen: | Synthetic peptide derived from human S100 A1 (amino acids 10-59). |
| Host: | Rabbit |
| Clonality: | Polyclonal |
| Isotype: | IgG |
| Conjugate: | Unconjugated |
| Purification: | Purified from rabbit serum by antigen affinity chromatography using the immunizing peptide. |
| Molecular Weight: | 10kDa |
| Product Form: | Liquid |
| Formulation: | Supplied in Phosphate Buffered Saline (without Mg ²⁺ and Ca ²⁺), pH 7.4, with 150mM NaCl, 0.02% Sodium Azide, and 50% Glycerol. |
| Storage: | Shipped at 4°C. Upon delivery aliquot and store at -20°C. Avoid freeze / thaw cycles. |
| Disclaimer: | This product is for research use only. It is not intended for diagnostic or therapeutic use. |

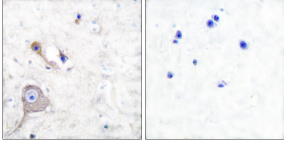
Images:



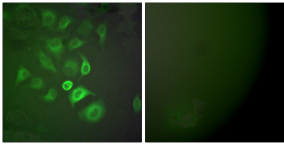
Western blot analysis of lysates from A549 cells using Anti-S100 A1 Antibody. The right hand lane represents a negative control, where the antibody is blocked by the immunising peptide.

Anti-S100 A1 Antibody (A94966)

Images continued:



Immunohistochemical analysis of paraffin-embedded human brain tissue using Anti-S100 A1 Antibody. The right hand panel represents a negative control, where the antibody was pre-incubated with the immunising peptide.



Immunofluorescence analysis of A549 cells using Anti-S100 A1 Antibody. The right hand panel represents a negative control, where the antibody was pre-incubated with the immunising peptide.