

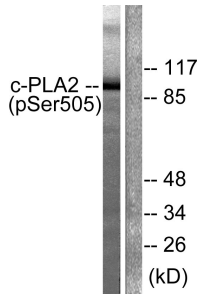
Anti-c-PLA2 (phospho Ser505) Antibody (A95011)

Specifications:

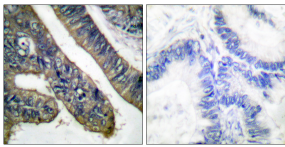
Name:	Anti-c-PLA2 (phospho Ser505) Antibody
Description:	Rabbit polyclonal antibody to c-PLA2 (phospho Ser505).
Specificity:	This antibody detects endogenous levels of c-PLA2 only when phosphorylated at Ser505.
Applications:	WB, IHC, IF, ELISA
Recommended Dilutions:	WB: 1:500-1:1000, IHC: 1:50-1:100, ELISA: 1:10000
Reactivity:	Human, Mouse, Rat
Immunogen:	Synthetic peptide derived from human c-PLA2 around the phosphorylation site of Ser505 (amino acids 471-520).
Host:	Rabbit
Clonality:	Polyclonal
Isotype:	IgG
Conjugate:	Unconjugated
Purification:	Purified from rabbit serum by antigen affinity chromatography using the immunizing phospho peptide.
Molecular Weight:	85kDa
Product Form:	Liquid
Formulation:	Supplied in Phosphate Buffered Saline (without Mg ²⁺ and Ca ²⁺), pH 7.4, with 150mM NaCl, 0.02% Sodium Azide, and 50% Glycerol.
Storage:	Shipped at 4°C. Upon delivery aliquot and store at -20°C. Avoid freeze / thaw cycles.
Disclaimer:	This product is for research use only. It is not intended for diagnostic or therapeutic use.

Anti-c-PLA2 (phospho Ser505) Antibody (A95011)

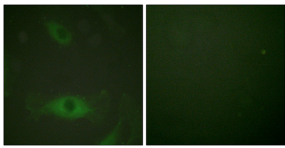
Images:



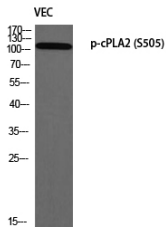
Western blot analysis of lysates from HeLa cells treated with TNF-a 20ng/ml 30' using Anti-c-PLA2 (phospho Ser505) Antibody. The right hand lane represents a negative control, where the antibody is blocked by the immunising peptide.



Immunohistochemical analysis of paraffin-embedded human colon carcinoma using Anti-c-PLA2 (phospho Ser505) Antibody. The right hand panel represents a negative control, where the antibody was pre-incubated with the immunising peptide.



Immunofluorescence analysis of HeLa cells, treated with TNF-a 20nM 15', using Anti-c-PLA2 (phospho Ser505) Antibody. The right hand panel represents a negative control, where the antibody was pre-incubated with the immunising peptide.



Western blot analysis of VEC using Anti-c-PLA2 (phospho Ser505) Antibody.