

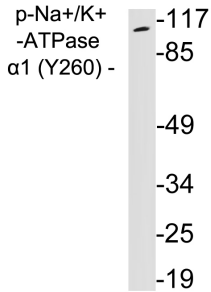
Anti-alpha 1 Sodium Potassium ATPase (phospho Tyr260) Antibody (A95106)

Specifications:

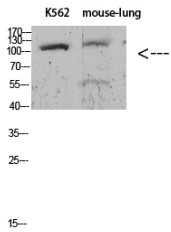
Name:	Anti-alpha 1 Sodium Potassium ATPase (phospho Tyr260) Antibody
Description:	Rabbit polyclonal antibody to alpha 1 Sodium Potassium ATPase (phospho Tyr260).
Specificity:	This antibody detects endogenous levels of Na ⁺ /K ⁺ -ATPase alpha1 only when phosphorylated at Tyr260.
Applications:	WB, ELISA
Recommended Dilutions:	IHC: 1:50-1:100, ELISA: 1:20000
Reactivity:	Human, Mouse, Rat
Immunogen:	Synthetic phospho-peptide derived from human Na ⁺ /K ⁺ -ATPase alpha1 around the phosphorylation site of Tyr260.
Host:	Rabbit
Clonality:	Polyclonal
Isotype:	IgG
Conjugate:	Unconjugated
Purification:	Purified from rabbit serum by antigen affinity chromatography using the immunizing phospho peptide.
Molecular Weight:	112kDa
Product Form:	Liquid
Formulation:	Supplied in Phosphate Buffered Saline (without Mg ²⁺ and Ca ²⁺), pH 7.4, with 150mM NaCl, 0.02% Sodium Azide, and 50% Glycerol.
Storage:	Shipped at 4°C. Upon delivery aliquot and store at -20°C. Avoid freeze / thaw cycles.
Disclaimer:	This product is for research use only. It is not intended for diagnostic or therapeutic use.

Anti-alpha 1 Sodium Potassium ATPase (phospho Tyr260) Antibody (A95106)

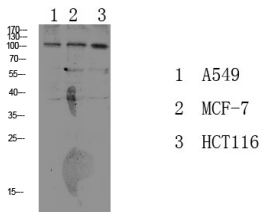
Images:



Western blot analysis of lysates from 293 cells treated with PMA using Anti-alpha 1 Sodium Potassium ATPase (phospho Tyr260) Antibody.



Western blot analysis of KB Hela lysate using Anti-alpha 1 Sodium Potassium ATPase (phospho Tyr260) Antibody.



Western blot analysis of various lysate using Anti-alpha 1 Sodium Potassium ATPase (phospho Tyr260) Antibody.