

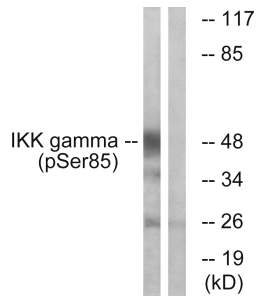
Anti-IKK-gamma (phospho Ser85) Antibody (A95270)

Specifications:

Name:	Anti-IKK-gamma (phospho Ser85) Antibody
Description:	Rabbit polyclonal antibody to IKK-gamma (phospho Ser85).
Specificity:	This antibody detects endogenous levels of IKK-gamma only when phosphorylated at Ser85.
Applications:	WB, ELISA
Recommended Dilutions:	WB: 1:500-1:1000, IHC: 1:50-1:100, ELISA: 1:10000
Reactivity:	Human
Immunogen:	Synthetic peptide derived from human IKK-gamma around the phosphorylation site of Ser85 (amino acids 51-100).
Host:	Rabbit
Clonality:	Polyclonal
Isotype:	IgG
Conjugate:	Unconjugated
Purification:	Purified from rabbit serum by antigen affinity chromatography using the immunizing phospho peptide.
Concentration:	1mg/ml
Molecular Weight:	48kDa
Product Form:	Liquid
Formulation:	Supplied in Phosphate Buffered Saline (without Mg ²⁺ and Ca ²⁺), pH 7.4, with 150mM NaCl, 0.02% Sodium Azide, and 50% Glycerol.
Storage:	Shipped at 4°C. Upon delivery aliquot and store at -20°C. Avoid freeze / thaw cycles.
Disclaimer:	This product is for research use only. It is not intended for diagnostic or therapeutic use.

Anti-IKK-gamma (phospho Ser85) Antibody (A95270)

Images:



Western blot analysis of lysates from HepG2 cells treated with Anisomycin 0.5uM 5h using Anti-IKK-gamma (phospho Ser85) Antibody. The right hand lane represents a negative control, where the antibody is blocked by the immunising peptide.