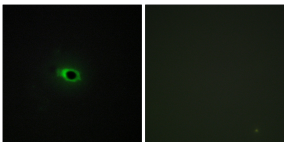


Anti-Collagen XII alpha1 Antibody (A95411)

Specifications:

Name:	Anti-Collagen XII alpha1 Antibody
Description:	Rabbit polyclonal antibody to Collagen XII alpha1.
Applications:	IHC, IF, ELISA
Recommended Dilutions:	IHC: 1:50-1:100, IF: 1:100-1:500, ELISA: 1:1000
Reactivity:	Human
Immunogen:	Synthetic peptide derived from human Collagen XII alpha1 (amino acids 1481-1530).
Host:	Rabbit
Clonality:	Polyclonal
Isotype:	IgG
Conjugate:	Unconjugated
Purification:	Purified from rabbit serum by antigen affinity chromatography using the immunizing peptide.
Molecular Weight:	333kDa
Product Form:	Liquid
Formulation:	Supplied in Phosphate Buffered Saline (without Mg ²⁺ and Ca ²⁺), pH 7.4, with 150mM NaCl, 0.02% Sodium Azide, and 50% Glycerol.
Storage:	Shipped at 4°C. Upon delivery aliquot and store at -20°C. Avoid freeze / thaw cycles.
Disclaimer:	This product is for research use only. It is not intended for diagnostic or therapeutic use.

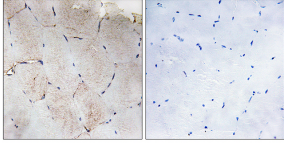
Images:



Immunofluorescence analysis of COS7 cells using Anti-Collagen XII alpha1 Antibody. The right hand panel represents a negative control, where the antibody was pre-incubated with the immunising peptide.

Anti-Collagen XII alpha1 Antibody (A95411)

Images continued:



Immunohistochemical analysis of paraffin-embedded human skeletal muscle tissue using Anti-Collagen XII alpha1 Antibody. The right hand panel represents a negative control, where the antibody was pre-incubated with the immunising peptide.