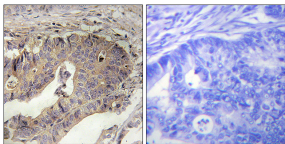


Anti-Fibrillin-1 Antibody (A95436)

Specifications:

Name:	Anti-Fibrillin-1 Antibody
Description:	Rabbit polyclonal antibody to Fibrillin-1.
Applications:	IHC, ELISA
Recommended Dilutions:	IHC: 1:50-1:100, ELISA: 1:40000
Reactivity:	Human, Mouse, Rat
Immunogen:	Synthetic peptide derived from human Fibrillin-1 (amino acids 2811-2860).
Host:	Rabbit
Clonality:	Polyclonal
Isotype:	IgG
Conjugate:	Unconjugated
Purification:	Purified from rabbit serum by antigen affinity chromatography using the immunizing peptide.
Molecular Weight:	312kDa
Product Form:	Liquid
Formulation:	Supplied in Phosphate Buffered Saline (without Mg ²⁺ and Ca ²⁺), pH 7.4, with 150mM NaCl, 0.02% Sodium Azide, and 50% Glycerol.
Storage:	Shipped at 4°C. Upon delivery aliquot and store at -20°C. Avoid freeze / thaw cycles.
Disclaimer:	This product is for research use only. It is not intended for diagnostic or therapeutic use.

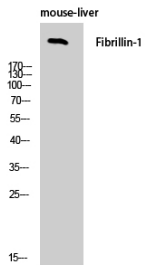
Images:



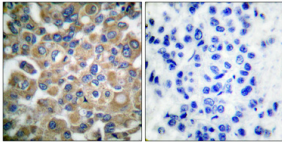
Immunohistochemical analysis of paraffin-embedded human breast carcinoma tissue using Anti-Fibrillin-1 Antibody. The right hand panel represents a negative control, where the antibody was pre-incubated with the immunising peptide.

Anti-Fibrillin-1 Antibody (A95436)

Images continued:



Western blot analysis of mouse liver cells using Anti-Fibrillin-1 Antibody.



Immunohistochemical analysis of paraffin-embedded human breast cancer using Anti-Fibrillin-1 Antibody 1:100 (4°C overnight). The right hand panel represents a negative control, where the antibody was pre-incubated with the immunising peptide.