

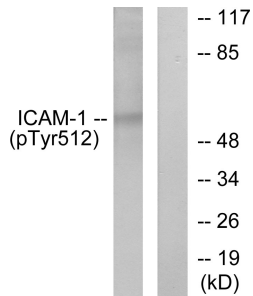
## Anti-ICAM-1 (phospho Tyr512) Antibody (A95508)

### Specifications:

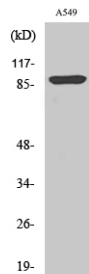
Name:	Anti-ICAM-1 (phospho Tyr512) Antibody
Description:	Rabbit polyclonal antibody to ICAM-1 (phospho Tyr512).
Specificity:	This antibody detects endogenous levels of ICAM-1 only when phosphorylated at Tyr512.
Applications:	WB, ELISA
Recommended Dilutions:	WB: 1:500-1:1000, IHC: 1:50-1:100, ELISA: 1:20000
Reactivity:	Human
Immunogen:	Synthetic peptide derived from human ICAM-1 around the phosphorylation site of Tyr512 (amino acids 479-528).
Host:	Rabbit
Clonality:	Polyclonal
Isotype:	IgG
Conjugate:	Unconjugated
Purification:	Purified from rabbit serum by antigen affinity chromatography using the immunizing phospho peptide.
Molecular Weight:	57kDa
Product Form:	Liquid
Formulation:	Supplied in Phosphate Buffered Saline (without Mg <sup>2+</sup> and Ca <sup>2+</sup> ), pH 7.4, with 150mM NaCl, 0.02% Sodium Azide, and 50% Glycerol.
Storage:	Shipped at 4°C. Upon delivery aliquot and store at -20°C. Avoid freeze / thaw cycles.
Disclaimer:	This product is for research use only. It is not intended for diagnostic or therapeutic use.

## Anti-ICAM-1 (phospho Tyr512) Antibody (A95508)

### Images:



Western blot analysis of lysates from HeLa cells treated with TNF-alpha 20ng/ml 5' using Anti-ICAM-1 (phospho Tyr512) Antibody. The right hand lane represents a negative control, where the antibody is blocked by the immunising peptide.



Western blot analysis of various cells using Anti-ICAM-1 (phospho Tyr512) Antibody.