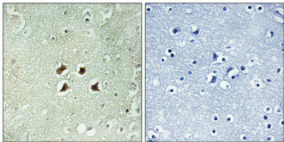


Anti-Huntingtin Antibody (A95558)

Specifications:

| | |
|------------------------|--|
| Name: | Anti-Huntingtin Antibody |
| Description: | Rabbit polyclonal antibody to Huntingtin. |
| Applications: | IHC, ELISA |
| Recommended Dilutions: | IHC: 1:50-1:100, ELISA: 1:10000 |
| Reactivity: | Human, Mouse, Rat |
| Immunogen: | Synthetic peptide derived from human Huntingtin (amino acids 387-436). |
| Host: | Rabbit |
| Clonality: | Polyclonal |
| Isotype: | IgG |
| Conjugate: | Unconjugated |
| Purification: | Purified from rabbit serum by antigen affinity chromatography using the immunizing peptide. |
| Molecular Weight: | 347kDa |
| Product Form: | Liquid |
| Formulation: | Supplied in Phosphate Buffered Saline (without Mg ²⁺ and Ca ²⁺), pH 7.4, with 150mM NaCl, 0.02% Sodium Azide, and 50% Glycerol. |
| Storage: | Shipped at 4°C. Upon delivery aliquot and store at -20°C. Avoid freeze / thaw cycles. |
| Disclaimer: | This product is for research use only. It is not intended for diagnostic or therapeutic use. |

Images:



Immunohistochemical analysis of paraffin-embedded human brain using Anti-Huntingtin Antibody 1:100 (4°C overnight). The right hand panel represents a negative control, where the antibody was pre-incubated with the immunising peptide.