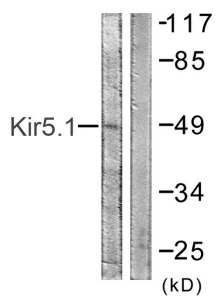


Anti-Kir5.1 Antibody (A96361)

Specifications:

| | |
|------------------------|--|
| Name: | Anti-Kir5.1 Antibody |
| Description: | Rabbit polyclonal antibody to Kir5.1. |
| Applications: | WB, IHC, IF, ELISA |
| Recommended Dilutions: | WB: 1:500-1:1000, IHC: 1:50-1:100, IF: 1:100-1:500, ELISA: 1:10000 |
| Reactivity: | Mouse, Rat |
| Immunogen: | Synthetic peptide derived from mouse Kir5.1 (amino acids 369-418). |
| Host: | Rabbit |
| Clonality: | Polyclonal |
| Isotype: | IgG |
| Conjugate: | Unconjugated |
| Purification: | Purified from rabbit serum by antigen affinity chromatography using the immunizing peptide. |
| Molecular Weight: | 47kDa |
| Product Form: | Liquid |
| Formulation: | Supplied in Phosphate Buffered Saline (without Mg ²⁺ and Ca ²⁺), pH 7.4, with 150mM NaCl, 0.02% Sodium Azide, and 50% Glycerol. |
| Storage: | Shipped at 4°C. Upon delivery aliquot and store at -20°C. Avoid freeze / thaw cycles. |
| Disclaimer: | This product is for research use only. It is not intended for diagnostic or therapeutic use. |

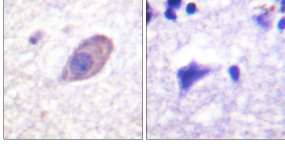
Images:



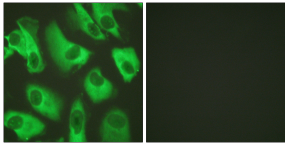
Western blot analysis of lysates from HeLa cells using Anti-Kir5.1 Antibody. The right hand lane represents a negative control, where the antibody is blocked by the immunising peptide.

Anti-Kir5.1 Antibody (A96361)

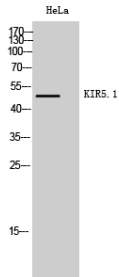
Images continued:



Immunohistochemical analysis of paraffin-embedded human brain tissue using Anti-Kir5.1 Antibody. The right hand panel represents a negative control, where the antibody was pre-incubated with the immunising peptide.



Immunofluorescence analysis of HeLa cells using Anti-Kir5.1 Antibody. The right hand panel represents a negative control, where the antibody was pre-incubated with the immunising peptide.



Western blot analysis of HeLa cells using Anti-Kir5.1 Antibody.