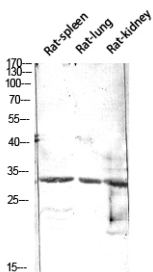


## Anti-CALB1 Antibody (A97669)

### Specifications:

Name:	Anti-CALB1 Antibody
Description:	Rabbit polyclonal antibody to CALB1.
Applications:	WB, ELISA
Recommended Dilutions:	WB: 1:500-1:1000, ELISA: 1:10000
Reactivity:	Human, Mouse, Rat
Immunogen:	Synthetic peptide derived from the C-terminal region of human CALB1 (amino acids 191-240).
Host:	Rabbit
Clonality:	Polyclonal
Isotype:	IgG
Conjugate:	Unconjugated
Purification:	The antibody was affinity-purified from rabbit antiserum by affinity-chromatography using epitope-specific peptide.
Molecular Weight:	30kDa
Product Form:	Liquid
Formulation:	Supplied in Phosphate Buffered Saline (without Mg <sup>2+</sup> and Ca <sup>2+</sup> ), pH 7.4, with 150mM NaCl, 0.02% Sodium Azide, and 50% Glycerol.
Storage:	Shipped at 4°C. Upon delivery aliquot and store at -20°C. Avoid freeze / thaw cycles.
Disclaimer:	This product is for research use only. It is not intended for diagnostic or therapeutic use.

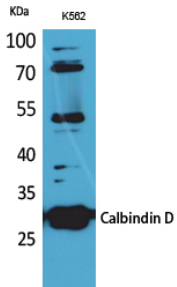
### Images:



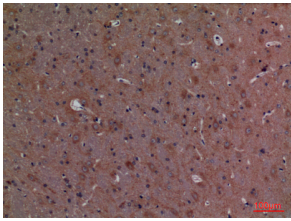
Western blot analysis of extracts from rat spleen, rat lung, and rat kidney using Anti-CALB1 Antibody.

## Anti-CALB1 Antibody (A97669)

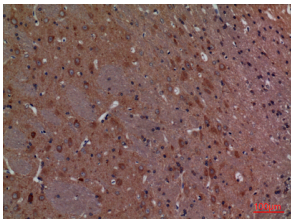
Images continued:



Western blot analysis of K562 cells using Anti-CALB1 Antibody.



Immunohistochemical analysis of paraffin-embedded rat brain using Anti-CALB1 Antibody.



Immunohistochemical analysis of paraffin-embedded rat brain using Anti-CALB1 Antibody.