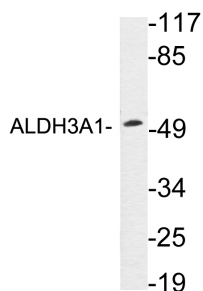


## Anti-ALDH3A1 Antibody (A98931)

### Specifications:

Name:	Anti-ALDH3A1 Antibody
Description:	Rabbit polyclonal antibody to ALDH3A1.
Applications:	WB, ELISA
Recommended Dilutions:	WB: 1:500-1:1000, ELISA: 1:10000
Reactivity:	Human, Rat
Immunogen:	Synthetic peptide derived from human ALDH3A1 (amino acids 236-285).
Host:	Rabbit
Clonality:	Polyclonal
Isotype:	IgG
Conjugate:	Unconjugated
Purification:	Purified from rabbit serum by antigen affinity chromatography using the immunizing peptide.
Molecular Weight:	50kDa
Product Form:	Liquid
Formulation:	Supplied in Phosphate Buffered Saline (without Mg <sup>2+</sup> and Ca <sup>2+</sup> ), pH 7.4, with 150mM NaCl, 0.02% Sodium Azide, and 50% Glycerol.
Storage:	Shipped at 4°C. Upon delivery aliquot and store at -20°C. Avoid freeze / thaw cycles.
Disclaimer:	This product is for research use only. It is not intended for diagnostic or therapeutic use.

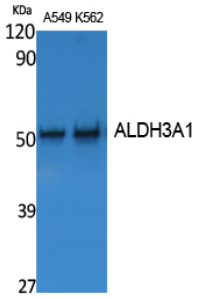
### Images:



Western blot analysis of lysates from A549 cells using Anti-ALDH3A1 Antibody.

## Anti-ALDH3A1 Antibody (A98931)

Images continued:



Western blot analysis of extracts from A549, K562 cells using Anti-ALDH3A1 Antibody.