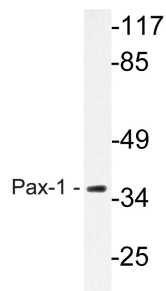


Anti-Pax-1 Antibody (A99612)

Specifications:

Name:	Anti-Pax-1 Antibody
Description:	Rabbit polyclonal antibody to Pax-1.
Applications:	WB, IHC, ELISA
Recommended Dilutions:	WB: 1:500-1:1000, IHC: 1:50-1:100, ELISA: 1:10000
Reactivity:	Human
Immunogen:	Synthetic peptide derived from human Pax-1 (amino acids 318-367).
Host:	Rabbit
Clonality:	Polyclonal
Isotype:	IgG
Conjugate:	Unconjugated
Purification:	Purified from rabbit serum by antigen affinity chromatography using the immunizing peptide.
Molecular Weight:	46kDa
Product Form:	Liquid
Formulation:	Supplied in Phosphate Buffered Saline (without Mg ²⁺ and Ca ²⁺), pH 7.4, with 150mM NaCl, 0.02% Sodium Azide, and 50% Glycerol.
Storage:	Shipped at 4°C. Upon delivery aliquot and store at -20°C. Avoid freeze / thaw cycles.
Disclaimer:	This product is for research use only. It is not intended for diagnostic or therapeutic use.

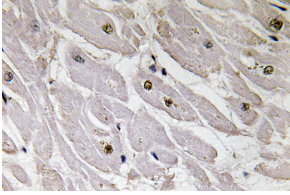
Images:



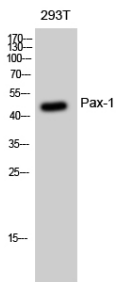
Western blot analysis of lysate from HeLa cells using Anti-Pax-1 Antibody.

Anti-Pax-1 Antibody (A99612)

Images continued:



Immunohistochemical analysis of paraffin-embedded human heart tissue using Anti-Pax-1 Antibody.



Western blot analysis of 293T cells using Anti-Pax-1 Antibody.