

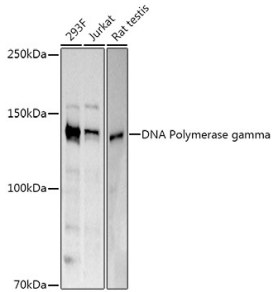
Anti-POLG Antibody (A10426)

Specifications:

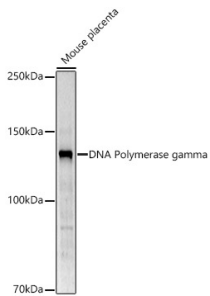
Name:	Anti-POLG Antibody
Description:	Rabbit polyclonal antibody to POLG.
Applications:	WB
Recommended Dilutions:	WB: 1:100-1:500
Reactivity:	Human, Mouse, Rat
Immunogen:	Recombinant fusion protein containing a sequence corresponding to amino acids 540-720 of human DNA Polymerase gamma (NP_002684.1).
Sequence:	QQDVMARACLQKLKGTTELLPKRPQHLPGHPGWYRKLCPRLDDPAWTPGPSLLSLQMR VTPKLMALTWDGFPLHYSERHGWGYLVPGRDNLAKLPTGTTLESAGVVCPYRAIESL YRKHCLEQGKQQLMPQEAGLAEEFLLTDNSAIWQTVEELDYLEVEAEAKMENLRAAVP GQPLALT
Host:	Rabbit
Clonality:	Polyclonal
Isotype:	IgG
Conjugate:	Unconjugated
Purification:	Affinity purification.
Molecular Weight:	140 kDa
Product Form:	Liquid
Formulation:	Supplied in Phosphate Buffered Saline, pH 7.3, with 50% Glycerol and 0.05% Proclin 300.
Storage:	Shipped at 4°C. Upon delivery aliquot and store at -20°C. Avoid freeze / thaw cycles.
Disclaimer:	This product is for research use only. It is not intended for diagnostic or therapeutic use.

Anti-POLG Antibody (A10426)

Images:



Western blot analysis of extracts of various cell lines, using Anti-POLG Antibody (A10426) at 1:500 dilution. The secondary antibody was Goat Anti-Rabbit IgG H&L Antibody (HRP) at 1:10,000 dilution. Lysates/proteins were present at 25 μ g per lane. The blocking buffer used was 3% non-fat dry milk in TBST. Detection was with a ECL Basic Kit. Exposure time: 60s.



Western blot analysis of extracts of Mouse placenta, using Anti-POLG Antibody (A10426) at 1:500 dilution. The secondary antibody was Goat Anti-Rabbit IgG H&L Antibody (HRP) at 1:10,000 dilution. Lysates/proteins were present at 25 μ g per lane. The blocking buffer used was 3% non-fat dry milk in TBST. Detection was with a ECL Basic Kit. Exposure time: 180s.