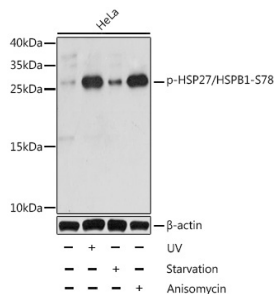


# Anti-Hsp27 (phospho Ser78) Antibody (A10902)

## Specifications:

Name:	Anti-Hsp27 (phospho Ser78) Antibody
Description:	Rabbit polyclonal antibody to Hsp27 (phospho Ser78).
Applications:	WB, IHC, ICC/IF
Recommended Dilutions:	WB: 1:500-1:2,000, IHC: 1:50-1:100, ICC/IF: 1:100-1:200
Reactivity:	Human
Immunogen:	A synthetic phosphorylated peptide around S78 of human HSP27/HSPB1 (NP_001531.1).
Sequence:	ALSRQ
Host:	Rabbit
Clonality:	Polyclonal
Isotype:	IgG
Conjugate:	Unconjugated
Purification:	Affinity purification.
Molecular Weight:	28 kDa
Product Form:	Liquid
Formulation:	Supplied in Phosphate Buffered Saline, pH 7.3, with 50% Glycerol and 0.01% Thiomersal.
Storage:	Shipped at 4°C. Upon delivery aliquot and store at -20°C. Avoid freeze / thaw cycles.
Disclaimer:	This product is for research use only. It is not intended for diagnostic or therapeutic use.

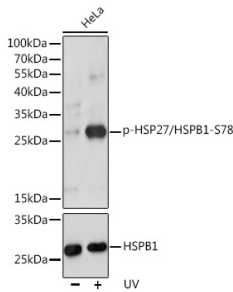
## Images:



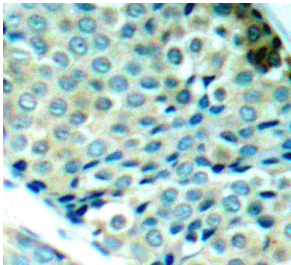
Western blot analysis of extracts of HeLa cells, using Anti-Hsp27 (phospho Ser78) Antibody (A10902) at 1:1,000 dilution. HeLa cells were treated by UV for 15-30 minutes or treated by serum-starvation overnight or treated by Anisomycin (25ug/mL) for 30 minutes after serum-starvation overnight. The secondary antibody was Goat Anti-Rabbit IgG H&L Antibody (HRP) at 1:10,000 dilution. Lysates/proteins were present at 25µg per lane. The blocking buffer used was 3% BSA. Detection was with a ECL Basic Kit. Exposure time: 30s.

## Anti-Hsp27 (phospho Ser78) Antibody (A10902)

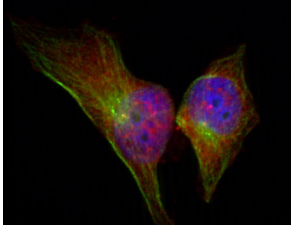
Images continued:



Western blot analysis of extracts of HeLa cells, using Anti-Hsp27 (phospho Ser78) Antibody (A10902) at 1:1,000 dilution or HSP27/HSPB1 antibody (A16332). HeLa cells were treated by UV at room temperature for 15-30 minutes. The secondary antibody was Goat Anti-Rabbit IgG H&L Antibody (HRP) at 1:10,000 dilution. Lysates/proteins were present at 25µg per lane. The blocking buffer used was 3% BSA. Detection was with a ECL Basic Kit. Exposure time: 30s.



Immunohistochemistry analysis of paraffin-embedded human breast carcinoma tissue using Anti-Hsp27 (phospho Ser78) Antibody (A10902). Perform microwave antigen retrieval with 10 mM Tris/EDTA buffer pH 9.0 before commencing with IHC staining protocol.



Immunofluorescence analysis of methanol-fixed HeLa cells showing cytoplasmic, nuclear, centrosomal, midbody staining using Anti-Hsp27 (phospho Ser78) Antibody (A10902).