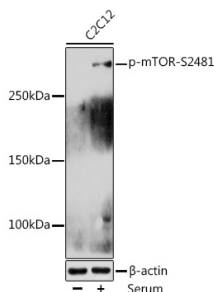


Anti-mTOR (phospho Ser2481) Antibody (A10970)

Specifications:

Name:	Anti-mTOR (phospho Ser2481) Antibody
Description:	Rabbit polyclonal antibody to mTOR (phospho Ser2481).
Applications:	WB
Recommended Dilutions:	WB: 1:500-1:2,000
Reactivity:	Human, Mouse
Immunogen:	A synthetic phosphorylated peptide around S2481 of human mTOR (NP_004949.1).
Sequence:	IHSFI
Host:	Rabbit
Clonality:	Polyclonal
Isotype:	IgG
Conjugate:	Unconjugated
Purification:	Affinity purification.
Molecular Weight:	289 kDa
Product Form:	Liquid
Formulation:	Supplied in Phosphate Buffered Saline, pH 7.3, with 50% Glycerol and 0.01% Thiomersal.
Storage:	Shipped at 4°C. Upon delivery aliquot and store at -20°C. Avoid freeze / thaw cycles.
Disclaimer:	This product is for research use only. It is not intended for diagnostic or therapeutic use.

Images:



Western blot analysis of extracts of C2C12 cells, using Anti-mTOR (phospho Ser2481) Antibody (A10970) at 1:1,000 dilution. C2C12 cells were treated by 10% FBS at 37°C for 30 minutes after serum-starvation overnight. The secondary antibody was Goat Anti-Rabbit IgG H&L Antibody (HRP) at 1:10,000 dilution. Lysates/proteins were present at 25µg per lane. The blocking buffer used was 3% BSA. Detection was with a ECL Enhanced Kit (RM00021). Exposure time: 5min.