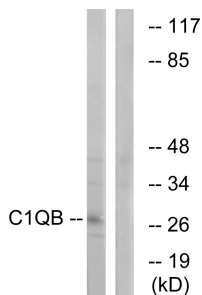


Anti-C1QB Antibody (A100010)

Specifications:

| | |
|------------------------|--|
| Name: | Anti-C1QB Antibody |
| Description: | Rabbit polyclonal antibody to C1QB. |
| Applications: | WB, IF, ELISA |
| Recommended Dilutions: | WB: 1:500-1:1000, IF: 1:100-1:500, ELISA: 1:40000 |
| Reactivity: | Human |
| Immunogen: | Synthetic peptide derived from human C1QB (amino acids 161-210). |
| Host: | Rabbit |
| Clonality: | Polyclonal |
| Isotype: | IgG |
| Conjugate: | Unconjugated |
| Purification: | Purified from rabbit serum by antigen affinity chromatography using the immunizing peptide. |
| Molecular Weight: | 26kDa |
| Product Form: | Liquid |
| Formulation: | Supplied in Phosphate Buffered Saline (without Mg ²⁺ and Ca ²⁺), pH 7.4, with 150mM NaCl, 0.02% Sodium Azide, and 50% Glycerol. |
| Storage: | Shipped at 4°C. Upon delivery aliquot and store at -20°C. Avoid freeze / thaw cycles. |
| Disclaimer: | This product is for research use only. It is not intended for diagnostic or therapeutic use. |

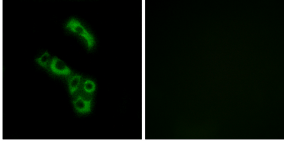
Images:



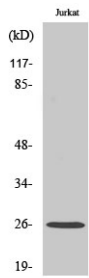
Western blot analysis of lysates from Jurkat cells using Anti-C1QB Antibody. The right hand lane represents a negative control, where the antibody is blocked by the immunising peptide.

Anti-C1QB Antibody (A100010)

Images continued:



Immunofluorescence analysis of A549 cells using Anti-C1QB Antibody. The right hand panel represents a negative control, where the antibody was pre-incubated with the immunising peptide.



Western blot analysis of various cells using Anti-C1QB Antibody.