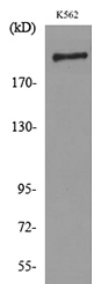


## Anti-SIGLEC1 Antibody (A100118)

### Specifications:

Name:	Anti-SIGLEC1 Antibody
Description:	Rabbit polyclonal antibody to SIGLEC1.
Applications:	WB, ELISA
Recommended Dilutions:	WB: 1:500-1:1000, ELISA: 1:10000
Reactivity:	Human
Immunogen:	Synthetic peptide derived from the Internal region of human SIGLEC1 (amino acids 1321-1370).
Host:	Rabbit
Clonality:	Polyclonal
Isotype:	IgG
Conjugate:	Unconjugated
Purification:	The antibody was affinity-purified from rabbit antiserum by affinity-chromatography using peptide.
Molecular Weight:	182kDa
Product Form:	Liquid
Formulation:	Supplied in Phosphate Buffered Saline (without Mg <sup>2+</sup> and Ca <sup>2+</sup> ), pH 7.4, with 150mM NaCl, 0.02% Sodium Azide, and 50% Glycerol.
Storage:	Shipped at 4°C. Upon delivery aliquot and store at -20°C. Avoid freeze / thaw cycles.
Disclaimer:	This product is for research use only. It is not intended for diagnostic or therapeutic use.

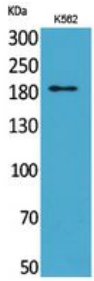
### Images:



Western blot analysis of lysate from K562 cells using Anti-SIGLEC1 Antibody.

## Anti-SIGLEC1 Antibody (A100118)

Images continued:



Western blot analysis of K562 cells using Anti-SIGLEC1 Antibody.