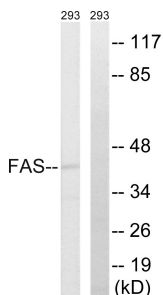


Anti-FAS Antibody (A100249)

Specifications:

Name:	Anti-FAS Antibody
Description:	Rabbit polyclonal antibody to FAS.
Applications:	WB, IF, ELISA
Recommended Dilutions:	WB: 1:500-1:1000, IF: 1:100-1:500, ELISA: 1:10000
Reactivity:	Human
Immunogen:	Synthetic peptide derived from human FAS (amino acids 257-306).
Host:	Rabbit
Clonality:	Polyclonal
Isotype:	IgG
Conjugate:	Unconjugated
Purification:	Purified from rabbit serum by antigen affinity chromatography using the immunizing peptide.
Molecular Weight:	37kDa
Product Form:	Liquid
Formulation:	Supplied in Phosphate Buffered Saline (without Mg ²⁺ and Ca ²⁺), pH 7.4, with 150mM NaCl, 0.02% Sodium Azide, and 50% Glycerol.
Storage:	Shipped at 4°C. Upon delivery aliquot and store at -20°C. Avoid freeze / thaw cycles.
Disclaimer:	This product is for research use only. It is not intended for diagnostic or therapeutic use.

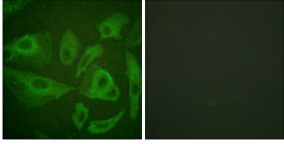
Images:



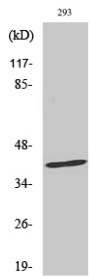
Western blot analysis of lysates from 293 cells using Anti-FAS Antibody. The right hand lane represents a negative control, where the antibody is blocked by the immunising peptide.

Anti-FAS Antibody (A100249)

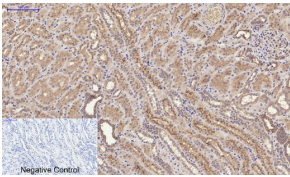
Images continued:



Immunofluorescence analysis of HeLa cells using Anti-FAS Antibody. The right hand panel represents a negative control, where the antibody was pre-incubated with the immunising peptide.



Western blot analysis of various cells using Anti-FAS Antibody.



Immunohistochemical analysis of paraffin-embedded human kidney tissue using Anti-FAS Antibody at 1:200 (4°C overnight). Negative control was secondary antibody only.