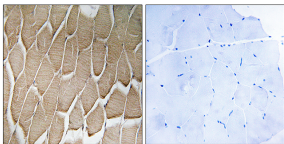


Anti-RAB34 Antibody (A100645)

Specifications:

Name:	Anti-RAB34 Antibody
Description:	Rabbit polyclonal antibody to RAB34.
Applications:	IHC, ELISA
Recommended Dilutions:	IHC: 1:50-1:100, ELISA: 1:5000
Reactivity:	Human
Immunogen:	Synthetic peptide derived from human RAB34 (amino acids 206-255).
Host:	Rabbit
Clonality:	Polyclonal
Isotype:	IgG
Conjugate:	Unconjugated
Purification:	Purified from rabbit serum by antigen affinity chromatography using the immunizing peptide.
Molecular Weight:	29kDa
Product Form:	Liquid
Formulation:	Supplied in Phosphate Buffered Saline (without Mg ²⁺ and Ca ²⁺), pH 7.4, with 150mM NaCl, 0.02% Sodium Azide, and 50% Glycerol.
Storage:	Shipped at 4°C. Upon delivery aliquot and store at -20°C. Avoid freeze / thaw cycles.
Disclaimer:	This product is for research use only. It is not intended for diagnostic or therapeutic use.

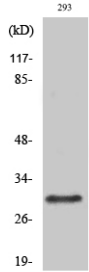
Images:



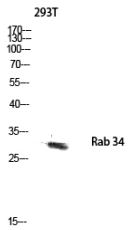
Immunohistochemical analysis of paraffin-embedded human skeletal muscle using Anti-RAB34 Antibody. The right hand panel represents a negative control, where the antibody was pre-incubated with the immunising peptide.

Anti-RAB34 Antibody (A100645)

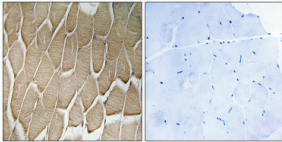
Images continued:



Western blot analysis of various cells using Anti-RAB34 Antibody.



Western blot analysis of 293T lysis using Anti-RAB34 Antibody.



Immunohistochemical analysis of paraffin-embedded human skeletal muscle using Anti-RAB34 Antibody 1:100 (4°C overnight). The right hand panel represents a negative control, where the antibody was pre-incubated with the immunising peptide.