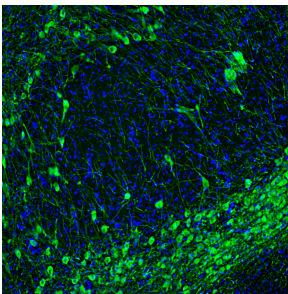


## Anti-Tyrosine Hydroxylase Antibody (A104316)

### Specifications:

Name:	Anti-Tyrosine Hydroxylase Antibody
Description:	Chicken polyclonal antibody to Tyrosine Hydroxylase.
Applications:	WB, ICC/IF, IHC, Flow Cytometry, FACS
Recommended Dilutions:	WB: 1:50,000, ICC/IF: 1:5,000, IHC: 1:5,000
Reactivity:	Human, Rat, Mouse
Immunogen:	Recombinant full-length human Tyrosine Hydroxylase, expressed in and purified from E. coli.
Host:	Chicken
Clonality:	Polyclonal
Isotype:	IgY
Conjugate:	Unconjugated
Molecular Weight:	58 kDa
Purity:	IgY preparation.
Product Form:	Liquid
Formulation:	Supplied as an aliquot of IgY preparation with 5mM Sodium Azide.
Storage:	Shipped at 4°C. Upon delivery aliquot and store at -20°C. Avoid freeze / thaw cycles.
Disclaimer:	This product is for research use only. It is not intended for diagnostic or therapeutic use.

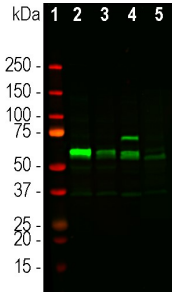
### Images:



Immunofluorescent analysis of rat brain section stained with Anti-Tyrosine Hydroxylase Antibody (1:5,000 | green). The blue is Hoechst staining of nuclear DNA. Anti-Tyrosine Hydroxylase Antibody stains the dopaminergic TH-positive neurons and their processes of the substantia nigra.

## Anti-Tyrosine Hydroxylase Antibody (A104316)

Images continued:



Western blot analysis of different tissue lysates using Anti-Tyrosine Hydroxylase Antibody (1:50,000 | green): [1] protein standard (red), [2] rat brain caudate/putmen region, [3] rat brain midbrain, [4] whole mouse brain without cerebellum, and [5] segment of cow midbrain. Strong band at about 58kDa corresponds to the TH protein.