

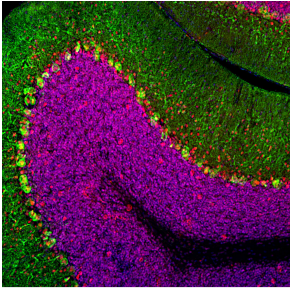
Anti-MeCP2 Antibody [4F11] (A104324)

Specifications:

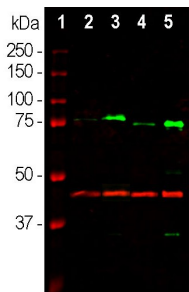
Name:	Anti-MeCP2 Antibody [4F11]
Description:	Mouse monoclonal (4F11) antibody to MeCP2.
Applications:	WB, ICC/IF, IHC
Recommended Dilutions:	WB: 1:5,000-1:10,000, ICC/IF: 1:1,000-1:5,000, IHC: 1:1,000-1:5,000
Reactivity:	Human, Rat, Mouse, Horse, Canine, Bovine, Porcine
Immunogen:	Recombinant full-length human MeCP2, expressed in and purified from E. coli.
Host:	Mouse
Clonality:	Monoclonal
Clone ID:	4F11
Isotype:	IgG1
Conjugate:	Unconjugated
Purification:	Immunogen affinity purification.
Concentration:	1 mg/ml
Molecular Weight:	70-75 kDa (by SDS-PAGE)
Product Form:	Liquid
Formulation:	Supplied in Phosphate Buffered Saline with 50% Glycerol and 5mM Sodium Azide.
Storage:	Shipped at 4°C. Upon delivery aliquot and store at -20°C. Avoid freeze / thaw cycles.
Disclaimer:	This product is for research use only. It is not intended for diagnostic or therapeutic use.

Anti-MeCP2 Antibody [4F11] (A104324)

Images:



Immunofluorescent analysis of rat cerebellum section stained with Anti-MeCP2 Antibody (1:500 | red) and co-stained with Anti-Calbindin Antibody (1:2,000 | green). The blue is DAPI staining of nuclear DNA. Following transcardial perfusion of rat with 4% paraformaldehyde, brain was post fixed for 1 hour, cut to 45 μ M, and free-floating sections were stained with the above antibodies. The Anti-MeCP2 Antibody specifically labels nuclei of neuronal cells to a variable degree, while calbindin is expressed in the dendrites and perikarya of Purkinje cells in the molecular layer of cerebellum.



Western blot analysis of tissue lysates using Anti-MeCP2 Antibody (1:1,000 | green): [1] protein standard (red), [2] rat whole brain, [3] nuclear fraction of rat brain, [4] mouse whole brain, [5] nuclear fraction of mouse brain lysate. Strong band at about 75kDa in rat and slightly lower in mouse nuclear enriched fractions corresponds to the MeCP2 protein. The same blot was simultaneously probed with Anti-GAP43 Antibody which detects GAP43 protein in all preparations with apparent molecular weight of 43kDa