

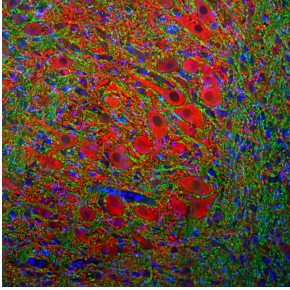
Anti-MAP2 Antibody (A104327)

Specifications:

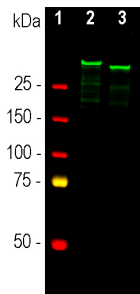
Name:	Anti-MAP2 Antibody
Description:	Goat polyclonal antibody to MAP2.
Specificity:	This antibody binds to the MAP2A and MAP2B isoforms but does not bind to the MAP2C and MAP2D isoforms which lack projection domain sequences.
Applications:	WB, ICC/IF
Recommended Dilutions:	WB: 1:2,000, ICC/IF: 1:1,000-1:2,000, IHC: 1:1,000-1:2,000
Reactivity:	Human, Rat, Mouse
Immunogen:	Mixture of recombinant fragments corresponding to amino acids 377-1505 of human MAP2 Projection P1, human MAP2 Projection P2, and human MAP2 Projection P3.
Host:	Goat
Clonality:	Polyclonal
Isotype:	IgG
Conjugate:	Unconjugated
Purification:	Immunogen affinity purification.
Concentration:	1 mg/ml
Molecular Weight:	280 kDa (by SDS-PAGE)
Product Form:	Liquid
Formulation:	Supplied in Phosphate Buffered Saline with 50% Glycerol and 5mM Sodium Azide.
Storage:	Shipped at 4°C. Upon delivery aliquot and store at -20°C. Avoid freeze / thaw cycles.
Disclaimer:	This product is for research use only. It is not intended for diagnostic or therapeutic use.

Anti-MAP2 Antibody (A104327)

Images:



Immunofluorescent analysis of rat brain stem section stained with Anti-MAP2A + MAP2B Antibody (1:2,000 | red), and co-stained with Anti-MBP Antibody (1:5,000 | green). Following transcardial perfusion of rat with 4% paraformaldehyde, brain was post fixed for 24 hours, cut to 45 μ M, and free-floating sections were stained with above antibodies. The Anti-MAP2A + MAP2B Antibody labels MAP2 protein in the perikarya and dendrites of the most neurons, notably motorneurons in the brain stem, and the Anti-MBP Antibody stains myelin sheath around axons.



Western blot analysis of whole brain lysates using Anti-MAP2A + MAP2B Antibody (1:5,000 | green): [1] protein standard (red), [2] rat, and [3] mouse brain lysate. A band at about 280kDa corresponds to the MAP2A and MAP2B proteins.