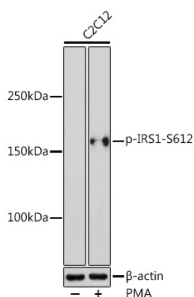


Anti-IRS1 (phospho Ser612) Antibody (A11031)

Specifications:

Name:	Anti-IRS1 (phospho Ser612) Antibody
Description:	Rabbit polyclonal antibody to IRS1 (phospho Ser612).
Applications:	WB, IHC
Recommended Dilutions:	WB: 1:500-1:1,000, IHC: 1:50-1:200
Reactivity:	Human, Mouse, Rat
Immunogen:	A synthetic phosphorylated peptide around S612 of human IRS1 (NP_005535.1).
Sequence:	PMSPG
Host:	Rabbit
Clonality:	Polyclonal
Isotype:	IgG
Conjugate:	Unconjugated
Purification:	Affinity purification.
Molecular Weight:	180 kDa
Product Form:	Liquid
Formulation:	Supplied in Phosphate Buffered Saline, pH 7.3, with 50% Glycerol and 0.02% Sodium Azide.
Storage:	Shipped at 4°C. Upon delivery aliquot and store at -20°C. Avoid freeze / thaw cycles.
Disclaimer:	This product is for research use only. It is not intended for diagnostic or therapeutic use.

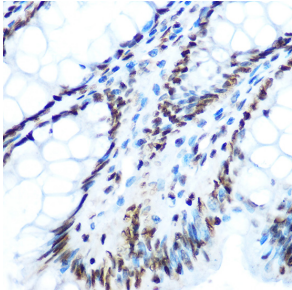
Images:



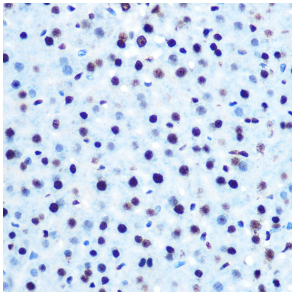
Western blot analysis of extracts of C2C12 cells, using Anti-IRS1 (phospho Ser612) Antibody (A11031) at 1:1,000 dilution. C2C12 cells were treated by PMA/TPA (200 nM) at 37°C for 30 minutes after serum-starvation overnight. The secondary antibody was Goat Anti-Rabbit IgG H&L Antibody (HRP) at 1:10,000 dilution. Lysates/proteins were present at 25µg per lane. The blocking buffer used was 3% non-fat dry milk in TBST. Detection was with a ECL Enhanced Kit (RM00021). Exposure time: 300s.

Anti-IRS1 (phospho Ser612) Antibody (A11031)

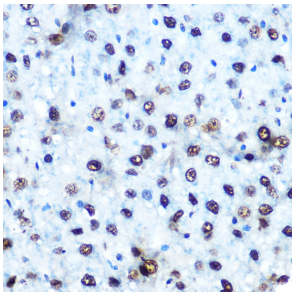
Images continued:



Immunohistochemistry analysis of paraffin-embedded human colon tissue using Anti-IRS1 (phospho Ser612) Antibody (A11031) at a dilution of 1:100 (40x lens). Perform microwave antigen retrieval with 10 mM Tris/EDTA buffer pH 9.0 before commencing with IHC staining protocol.



Immunohistochemistry analysis of paraffin-embedded mouse liver using Anti-IRS1 (phospho Ser612) Antibody (A11031) at a dilution of 1:100 (40x lens). Perform microwave antigen retrieval with 10 mM Tris/EDTA buffer pH 9.0 before commencing with IHC staining protocol.



Immunohistochemistry analysis of paraffin-embedded rat liver using Anti-IRS1 (phospho Ser612) Antibody (A11031) at a dilution of 1:100 (40x lens). Perform microwave antigen retrieval with 10 mM Tris/EDTA buffer pH 9.0 before commencing with IHC staining protocol.