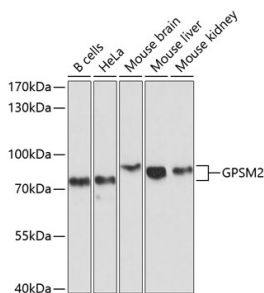


Anti-LGN Antibody (A11332)

Specifications:

Name:	Anti-LGN Antibody
Description:	Rabbit polyclonal antibody to LGN.
Applications:	WB
Recommended Dilutions:	WB: 1:1,000-1:2,000
Reactivity:	Human, Mouse
Immunogen:	Recombinant fusion protein containing a sequence corresponding to amino acids 380-490 of human GPSM2 (NP_037428.3).
Sequence:	STNNSIMSENTEIDSSSLNGVRPKLGRRHSMENMELMKLTPEKVNWNSEILAKQKPLI AKPSAKLLFVNRLKGKKYKTNSSTKVLQDASNSIDHRIPNSQRKISADTIGDE
Host:	Rabbit
Clonality:	Polyclonal
Isotype:	IgG
Conjugate:	Unconjugated
Purification:	Affinity purification.
Molecular Weight:	76 kDa
Product Form:	Liquid
Formulation:	Supplied in Phosphate Buffered Saline, pH 7.3, with 50% Glycerol and 0.01% Thiomersal.
Storage:	Shipped at 4°C. Upon delivery aliquot and store at -20°C. Avoid freeze / thaw cycles.
Disclaimer:	This product is for research use only. It is not intended for diagnostic or therapeutic use.

Images:



Western blot analysis of extracts of various cell lines, using Anti-LGN Antibody (A11332) at 1:1,000 dilution. The secondary antibody was Goat Anti-Rabbit IgG H&L Antibody (HRP) at 1:10,000 dilution. Lysates/proteins were present at 25µg per lane. The blocking buffer used was 3% non-fat dry milk in TBST. Detection was with a ECL Basic Kit. Exposure time: 10s.