

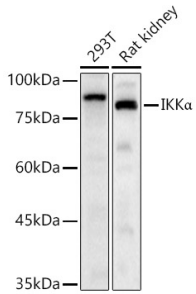
Anti-IKK alpha Antibody (A11508)

Specifications:

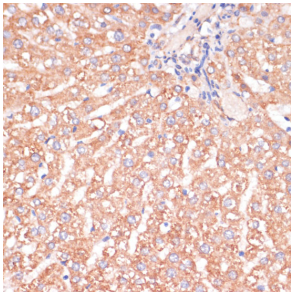
| | |
|------------------------|---|
| Name: | Anti-IKK alpha Antibody |
| Description: | Rabbit polyclonal antibody to IKK alpha. |
| Applications: | WB, IHC, ICC/IF, IP |
| Recommended Dilutions: | WB: 1:1,000-1:5,000, IHC: 1:50-1:200, ICC/IF: 1:50-1:200, IP: 1:50-1:200 |
| Reactivity: | Human, Mouse, Rat |
| Immunogen: | A synthetic peptide corresponding to a sequence within amino acids 600-700 of human IKKa (NP_001269.3). |
| Sequence: | VLKELFGHLSKLLGCKQKIIDLLPKVEVALSNIKEADNTVMFMQGKRQKEIWHLLKIA CTQSSARSLVGSSLEGAVTPQTSAWLPPTSAEHDHSLSCVVTP |
| Host: | Rabbit |
| Clonality: | Polyclonal |
| Isotype: | IgG |
| Conjugate: | Unconjugated |
| Purification: | Affinity purification. |
| Molecular Weight: | 85 kDa |
| Product Form: | Liquid |
| Formulation: | Supplied in Phosphate Buffered Saline, pH 7.3, with 50% Glycerol and 0.05% Proclin 300. |
| Storage: | Shipped at 4°C. Upon delivery aliquot and store at -20°C. Avoid freeze / thaw cycles. |
| Disclaimer: | This product is for research use only. It is not intended for diagnostic or therapeutic use. |

Anti-IKK alpha Antibody (A11508)

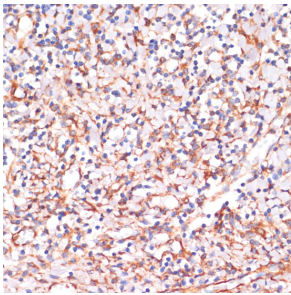
Images:



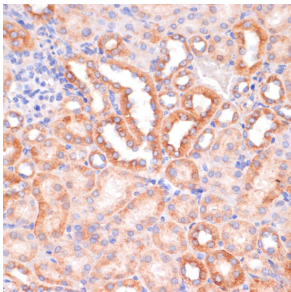
Western blot analysis of various lysates, using Anti-IKK alpha Antibody (A11508) at 1:2,000 dilution. The secondary antibody was Goat Anti-Rabbit IgG H&L Antibody (HRP) at 1:10,000 dilution. Lysates/proteins were present at 25 μ g per lane. The blocking buffer used was 3% non-fat dry milk in TBST. Detection was with a ECL Basic Kit. Exposure time: 1s.



Immunohistochemistry analysis of paraffin-embedded rat liver using Anti-IKK alpha Antibody (A11508) at a dilution of 1:100 (40x lens). Perform microwave antigen retrieval with 10 mM PBS buffer pH 7.2 before commencing with IHC staining protocol.



Immunohistochemistry analysis of paraffin-embedded human tonsil using Anti-IKK alpha Antibody (A11508) at a dilution of 1:100 (40x lens). Perform microwave antigen retrieval with 10 mM PBS buffer pH 7.2 before commencing with IHC staining protocol.



Immunohistochemistry analysis of paraffin-embedded mouse kidney using Anti-IKK alpha Antibody (A11508) at a dilution of 1:100 (40x lens). Perform microwave antigen retrieval with 10 mM PBS buffer pH 7.2 before commencing with IHC staining protocol.