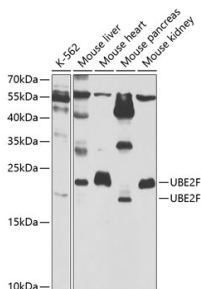


Anti-UBE2F Antibody (A11815)

Specifications:

Name:	Anti-UBE2F Antibody
Description:	Rabbit polyclonal antibody to UBE2F.
Applications:	WB
Recommended Dilutions:	WB: 1:500-1:2000
Reactivity:	Human, Mouse
Immunogen:	Recombinant fusion protein containing a sequence corresponding to amino acids 1-185 of human UBE2F (NP_542409.1).
Sequence:	MLTLASKLKRDDGLKGSRTAATASDSTRRVSVRDKLLVKEVAELEANLPCTCKVHFPD PNKLHCFQLTVTPDEGYQGGKQFETEVDPAYNMVPPKVKCLTKIWHPNITETGEIC LSLLREHSIDGTGWAPTRTLKDVVWGLNSLFTDLLNFDDPLNIEAAEHHLRDKEDFRN KVDDYIKRYAR
Host:	Rabbit
Clonality:	Polyclonal
Isotype:	IgG
Conjugate:	Unconjugated
Purification:	Affinity purification.
Molecular Weight:	21kDa
Formulation:	Supplied in Phosphate Buffered Saline, pH 7.30, with 0.02% Sodium Azide and 50% Glycerol.
Storage:	Shipped at 4°C. Upon delivery aliquot and store at -20°C. Avoid freeze / thaw cycles.
Disclaimer:	This product is for research use only. It is not intended for diagnostic or therapeutic use.

Images:



Western blot analysis of extracts of various cell lines, using Anti-UBE2F Antibody (A5160) at 1:1,000 dilution.

Secondary antibody: Goat Anti-Rabbit IgG (H+L) (HRP) (AS014) at 1:10,000 dilution.

Lysates / proteins: 25µg per lane.

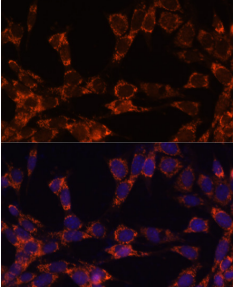
Blocking buffer: 3% non-fat dry milk in TBST.

Detection: ECL Basic Kit (RM00020).

Exposure time: 90s.

Anti-UBE2F Antibody (A11815)

Images continued:



Immunofluorescence analysis of NIH-3T3 cells using Anti-UBE2F Antibody (A5160) at dilution of 1:100. Blue: DAPI for nuclear staining.