

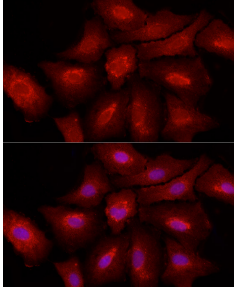
Anti-Fibroblast activation protein, alpha Antibody (A11961)

Specifications:

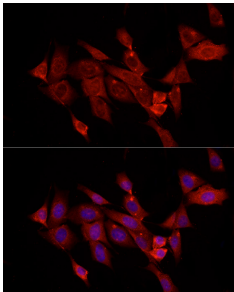
Name:	Anti-Fibroblast activation protein, alpha Antibody
Description:	Rabbit polyclonal antibody to Fibroblast activation protein, alpha.
Applications:	ICC/IF
Recommended Dilutions:	ICC/IF: 1:50-1:200
Reactivity:	Human, Mouse, Rat
Immunogen:	Recombinant fusion protein containing a sequence corresponding to amino acids 600-760 of human Fibroblast activation protein-a (FAP) (NP_004451.2).
Sequence:	QITAVRKFIEMGFIDEKRIAIWGWSYGGYVSSLALASGTGLFKCGIAVAPVSSWEYYA SVYTERFMGLPTKDDNLEHYKNSTVMARAEYFRNVDYLLIHGTADDNVHFQNSAQIAK ALVNAQVDFQAMWYSDQNHGLSGLSTNHLYTHMTHFLKQCFSLSD
Host:	Rabbit
Clonality:	Polyclonal
Isotype:	IgG
Conjugate:	Unconjugated
Purification:	Affinity purification.
Molecular Weight:	90 kDa
Product Form:	Liquid
Formulation:	Supplied in Phosphate Buffered Saline, pH 7.3, with 50% Glycerol and 0.01% Thiomersal.
Storage:	Shipped at 4°C. Upon delivery aliquot and store at -20°C. Avoid freeze / thaw cycles.
Disclaimer:	This product is for research use only. It is not intended for diagnostic or therapeutic use.

Anti-Fibroblast activation protein, alpha Antibody (A11961)

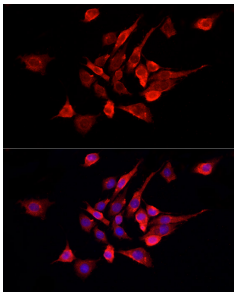
Images:



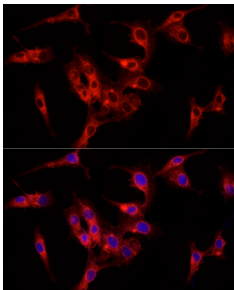
Immunofluorescence analysis of A-549 cells using Anti-Fibroblast activation protein, alpha Antibody (A11961) at a dilution of 1:100 (40x lens). DAPI was used to stain the cell nuclei (blue).



Immunofluorescence analysis of NIH/3T3 cells using Anti-Fibroblast activation protein, alpha Antibody (A11961) at a dilution of 1:100 (40x lens). DAPI was used to stain the cell nuclei (blue).



Immunofluorescence analysis of PC-12 cells using Anti-Fibroblast activation protein, alpha Antibody (A11961) at a dilution of 1:100 (40x lens). DAPI was used to stain the cell nuclei (blue).



Immunofluorescence analysis of U-87MG cells using Anti-Fibroblast activation protein, alpha Antibody (A11961) at a dilution of 1:100 (40x lens). DAPI was used to stain the cell nuclei (blue).