

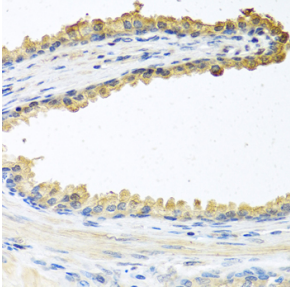
Anti-COCH Antibody (A11989)

Specifications:

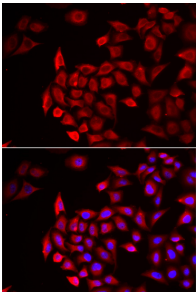
Name:	Anti-COCH Antibody
Description:	Rabbit polyclonal antibody to COCH.
Applications:	IHC, ICC/IF
Recommended Dilutions:	IHC: 1:50-1:100, ICC/IF: 1:50-1:100
Reactivity:	Human
Immunogen:	Recombinant fusion protein containing a sequence corresponding to amino acids 20-260 of human COCH (NP_001128530.1).
Sequence:	GPAGSEGAAPAIATCFTRGLDIRKEKADVLCPPGGCLEEFSVYGNIVYASVSSICGAA VHRGVISNSGGPVRVYSLPGRENYSSVDANGIQSQMLSRWSASFTVTKGKSSTQEATG QAVSTAHPPTGKRLKKTPEKKTGNKDCKADIAFLIDGSFNIGQRRFNLQKNFVGKVAL MLGIGTEGPHVGLVQASEHPKIEFYLNFTSAKDVLFAIKEVGFRGGNSNTGKALKHT AQKFFTVDA
Host:	Rabbit
Clonality:	Polyclonal
Isotype:	IgG
Conjugate:	Unconjugated
Purification:	Affinity purification.
Product Form:	Liquid
Formulation:	Supplied in Phosphate Buffered Saline, pH 7.3, with 50% Glycerol and 0.02% Sodium Azide.
Storage:	Shipped at 4°C. Upon delivery aliquot and store at -20°C. Avoid freeze / thaw cycles.
Disclaimer:	This product is for research use only. It is not intended for diagnostic or therapeutic use.

Anti-COCH Antibody (A11989)

Images:



Immunohistochemistry analysis of paraffin-embedded human prostate using Anti-COCH Antibody (A11989) at a dilution of 1:100 (40x lens). Perform microwave antigen retrieval with 10 mM PBS buffer pH 7.2 before commencing with IHC staining protocol.



Immunofluorescence analysis of HeLa cells using Anti-COCH Antibody (A11989). DAPI was used to stain the cell nuclei (blue).