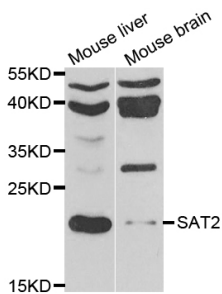


Anti-SAT2 Antibody (A12093)

Specifications:

Name:	Anti-SAT2 Antibody
Description:	Rabbit polyclonal antibody to SAT2.
Applications:	WB, IF
Recommended Dilutions:	WB: 1:500-1:2000, IF: 1:50-1:100
Reactivity:	Human, Mouse
Immunogen:	Recombinant fusion protein containing a sequence corresponding to amino acids 1-170 of human SAT2 (NP_597998.1).
Sequence:	MASVRIREAKEGDCGDILRLIRELAEFEKLSQVKISEEALRADGFGDNPFYHCLVAE ILPAPGKLLGPCVVGYGIIYFYISTWKGRTIYLEDIYVMPEYRGQGIGSKIKKVAEV ALDKGCSQFRLAVLDWNQRAMDLYKALGAQDLTEAEGWHFFCFQGEATRKLAKG
Host:	Rabbit
Clonality:	Polyclonal
Isotype:	IgG
Conjugate:	Unconjugated
Purification:	Affinity purification.
Molecular Weight:	19kDa
Formulation:	Supplied in Phosphate Buffered Saline, pH 7.30, with 0.02% Sodium Azide and 50% Glycerol.
Storage:	Shipped at 4°C. Upon delivery aliquot and store at -20°C. Avoid freeze / thaw cycles.
Disclaimer:	This product is for research use only. It is not intended for diagnostic or therapeutic use.

Images:



Western blot analysis of extracts of various cell lines, using Anti-SAT2 Antibody (A7211) at 1:1,000 dilution.

Secondary antibody: Goat Anti-Rabbit IgG (H+L) (HRP) (AS014) at 1:10,000 dilution.

Lysates / proteins: 25µg per lane.

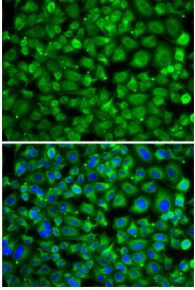
Blocking buffer: 3% non-fat dry milk in TBST.

Detection: ECL Basic Kit (RM00020).

Exposure time: 90s.

Anti-SAT2 Antibody (A12093)

Images continued:



Immunofluorescence analysis of A-549 cells using Anti-SAT2 Antibody (A7211). Blue: DAPI for nuclear staining.