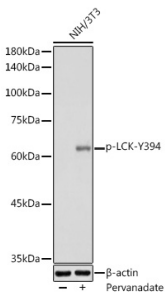


## Anti-Lck (phospho Tyr394) Antibody (A12463)

### Specifications:

Name:	Anti-Lck (phospho Tyr394) Antibody
Description:	Rabbit polyclonal antibody to Lck (phospho Tyr394).
Applications:	WB
Recommended Dilutions:	WB: 1:500-1:1,000
Reactivity:	Human, Mouse
Immunogen:	A synthetic phosphorylated peptide around Y394 of human LCK (NP_005347.3).
Sequence:	NEYTA
Host:	Rabbit
Clonality:	Polyclonal
Isotype:	IgG
Conjugate:	Unconjugated
Purification:	Affinity purification.
Molecular Weight:	60 kDa
Product Form:	Liquid
Formulation:	Supplied in Phosphate Buffered Saline, pH 7.3, with 50% Glycerol and 0.01% Thiomersal.
Storage:	Shipped at 4°C. Upon delivery aliquot and store at -20°C. Avoid freeze / thaw cycles.
Disclaimer:	This product is for research use only. It is not intended for diagnostic or therapeutic use.

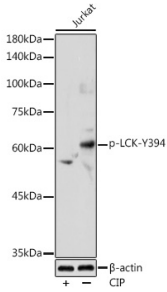
### Images:



Western blot analysis of extracts of NIH/3T3 cells, using Anti-Lck (phospho Tyr394) Antibody (A12463) at 1:1,000 dilution. NIH/3T3 cells were treated by Pervanadate (1 mM) at 37°C for 30 minutes after serum-starvation overnight. The secondary antibody was Goat Anti-Rabbit IgG H&L Antibody (HRP) at 1:10,000 dilution. Lysates/proteins were present at 25µg per lane. The blocking buffer used was 3% non-fat dry milk in TBST. Detection was with a ECL Basic Kit. Exposure time: 180s.

## Anti-Lck (phospho Tyr394) Antibody (A12463)

Images continued:



Western blot analysis of extracts of Jurkat cells, using Anti-Lck (phospho Tyr394) Antibody (A12463) at 1:1,000 dilution. Jurkat cells were treated by CIP(20uL/400ul) at 37°C for 1 hour. The secondary antibody was Goat Anti-Rabbit IgG H&L Antibody (HRP) at 1:10,000 dilution. Lysates/proteins were present at 25µg per lane. The blocking buffer used was 3% non-fat dry milk in TBST. Detection was with a ECL Enhanced Kit (RM00021). Exposure time: 180s.