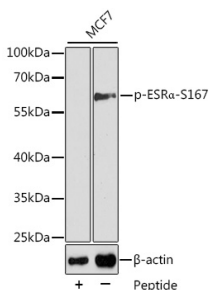


Anti-Estrogen Receptor alpha (phospho Ser167) Antibody (A12489)

Specifications:

Name:	Anti-Estrogen Receptor alpha (phospho Ser167) Antibody
Description:	Rabbit polyclonal antibody to Estrogen Receptor alpha (phospho Ser167).
Applications:	WB, IHC, ICC/IF
Recommended Dilutions:	WB: 1:500-1:2,000, IHC: 1:50-1:100, ICC/IF: 1:100-1:200
Reactivity:	Human
Immunogen:	A synthetic phosphorylated peptide around S167 of human Estrogen Receptor alpha (ESR1) (NP_000116.2).
Sequence:	LASTN
Host:	Rabbit
Clonality:	Polyclonal
Isotype:	IgG
Conjugate:	Unconjugated
Purification:	Affinity purification.
Molecular Weight:	66 kDa
Product Form:	Liquid
Formulation:	Supplied in Phosphate Buffered Saline, pH 7.3, with 50% Glycerol and 0.01% Thiomersal.
Storage:	Shipped at 4°C. Upon delivery aliquot and store at -20°C. Avoid freeze / thaw cycles.
Disclaimer:	This product is for research use only. It is not intended for diagnostic or therapeutic use.

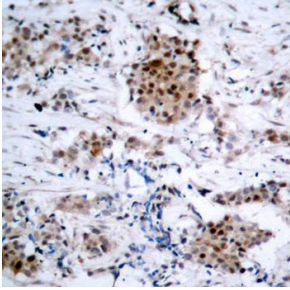
Images:



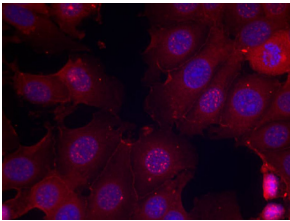
Western blot analysis of extracts from MCF7 cells using Anti-Estrogen Receptor alpha (phospho Ser167) Antibody (A12489). The secondary antibody was Goat Anti-Rabbit IgG H&L Antibody (HRP) at 1:10,000 dilution. Lysates/proteins were present at 25µg per lane. The blocking buffer used was 3% BSA.

Anti-Estrogen Receptor alpha (phospho Ser167) Antibody (A12489)

Images continued:



Immunohistochemistry analysis of paraffin-embedded human breast carcinoma tissue using Anti-Estrogen Receptor alpha (phospho Ser167) Antibody (A12489). Perform microwave antigen retrieval with 10 mM Tris/EDTA buffer pH 9.0 before commencing with IHC staining protocol.



Immunofluorescence analysis of methanol-fixed MCF-7 cells using Anti-Estrogen Receptor alpha (phospho Ser167) Antibody (A12489).