

## Anti-SCRIB Antibody (A121142)

### Specifications:

Name:	Anti-SCRIB Antibody
Description:	Goat polyclonal antibody to SCRIB.
Applications:	ELISA, WB, IF
Reactivity:	Human
Immunogen:	Synthetic peptide corresponding to Human SCRIB (internal region).
Sequence:	C-PEGPGKEKELPGQ
Host:	Goat
Clonality:	Polyclonal
Isotype:	IgG
Conjugate:	Unconjugated
Purification:	Purified from goat serum by ammonium sulphate precipitation followed by antigen affinity chromatography using the immunizing peptide.
Concentration:	100 µg at 0.5 mg/ml.
Product Form:	Liquid
Formulation:	Supplied in Tris Buffered Saline, 0.02% sodium azide, pH 7.3 with 0.5% BSA.
Storage:	Shipped at 4°C. Upon delivery aliquot and store at -20°C. Avoid freeze / thaw cycles.
Disclaimer:	This product is for research use only. It is not intended for diagnostic or therapeutic use.

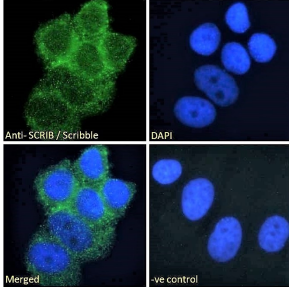
### Images:



Anti-SCRIB Antibody (A121159) (2µg/ml) staining of HeLa (A), HepG2 (B) and U2OS (C) cell lysate (35µg protein in RIPA buffer). Detected by chemiluminescence.

## Anti-SCRIB Antibody (A121142)

Images continued:



Anti-SCRIB Antibody (A121159) - Immunofluorescence analysis of paraformaldehyde fixed MCF7 cells, permeabilized with 0.15% Triton. Primary incubation 1hr (10 $\mu$ g/ml) followed by Alexa Fluor 488 secondary antibody (2 $\mu$ g/ml), showing cell junction staining. The nuclear stain is DAPI (blue). Negative control: Unimmunized goat IgG (10 $\mu$ g/ml) followed by Alexa Fluor 488 secondary antibody (2 $\mu$ g/ml).