

Anti-EDF1 Antibody (A121150)

Specifications:

Name:	Anti-EDF1 Antibody
Description:	Goat polyclonal antibody to EDF1.
Applications:	WB, IF, FC
Reactivity:	Human, Mouse
Immunogen:	Synthetic peptide corresponding to EDF1.
Sequence:	AESDWDTVTVLRK-C
Host:	Goat
Clonality:	Polyclonal
Isotype:	IgG
Conjugate:	Unconjugated
Purification:	Purified from goat serum by ammonium sulphate precipitation followed by antigen affinity chromatography using the immunizing peptide.
Concentration:	100 µg at 0.5 mg/ml.
Product Form:	Liquid
Formulation:	Supplied in Tris Buffered Saline, 0.02% sodium azide, pH 7.3 with 0.5% BSA.
Storage:	Shipped at 4°C. Upon delivery aliquot and store at -20°C. Avoid freeze / thaw cycles.
Disclaimer:	This product is for research use only. It is not intended for diagnostic or therapeutic use.

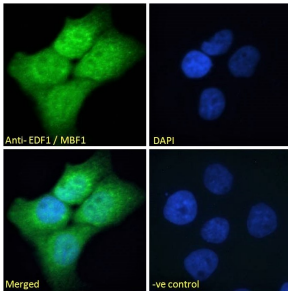
Images:



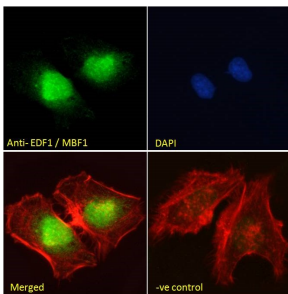
Anti-EDF1 Antibody (A121147) (0.5µg/ml) staining of HEK293 (A), HeLa (B) and (1µg/ml) NIH3T3 (C) Nuclear cell lysate (35µg protein in RIPA buffer). Detected by chemiluminescence.

Anti-EDF1 Antibody (A121150)

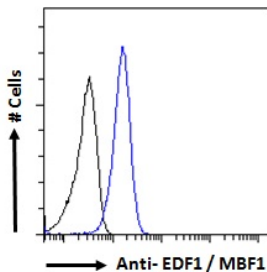
Images continued:



Anti-EDF1 Antibody (A121147) - Immunofluorescence analysis of paraformaldehyde fixed A431 cells, permeabilized with 0.15% Triton. Primary incubation 1hr (10 μ g/ml) followed by Alexa Fluor 488 secondary antibody (2 μ g/ml), showing nuclear and cytoplasmic staining. The nuclear stain is DAPI (blue). Negative control: Unimmunized goat IgG (10 μ g/ml) followed by Alexa Fluor 488 secondary antibody (2 μ g/ml).



Anti-EDF1 Antibody (A121147) - Immunofluorescence analysis of paraformaldehyde fixed HeLa cells, permeabilized with 0.15% Triton. Primary incubation 1hr (10 μ g/ml) followed by Alexa Fluor 488 secondary antibody (2 μ g/ml), showing nuclear staining. Actin filaments were stained with phalloidin (red) and the nuclear stain is DAPI (blue). Negative control: Unimmunized goat IgG (10 μ g/ml) followed by Alexa Fluor 488 secondary antibody (2 μ g/ml).



Anti-EDF1 Antibody (A121147) - Flow cytometric analysis of paraformaldehyde fixed A431 cells (blue line), permeabilized with 0.5% Triton. Primary incubation 1hr (10 μ g/ml) followed by Alexa Fluor 488 secondary antibody (1 μ g/ml). IgG control: Unimmunized goat IgG (black line) followed by Alexa Fluor 488 secondary antibody.