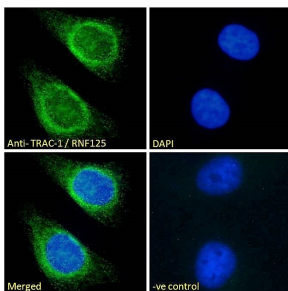


Anti-TRAC-1 Antibody (A121171)

Specifications:

Name:	Anti-TRAC-1 Antibody
Description:	Goat polyclonal antibody to TRAC-1.
Applications:	ELISA, IF, FC
Reactivity:	Human
Immunogen:	Synthetic peptide corresponding to Human TRAC-1 (C terminal).
Sequence:	C-RSLLEYVNHSNTT
Host:	Goat
Clonality:	Polyclonal
Isotype:	IgG
Conjugate:	Unconjugated
Purification:	Purified from goat serum by ammonium sulphate precipitation followed by antigen affinity chromatography using the immunizing peptide.
Concentration:	100 µg at 0.5 mg/ml.
Product Form:	Liquid
Formulation:	Supplied in Tris Buffered Saline, 0.02% sodium azide, pH 7.3 with 0.5% BSA.
Storage:	Shipped at 4°C. Upon delivery aliquot and store at -20°C. Avoid freeze / thaw cycles.
Disclaimer:	This product is for research use only. It is not intended for diagnostic or therapeutic use.

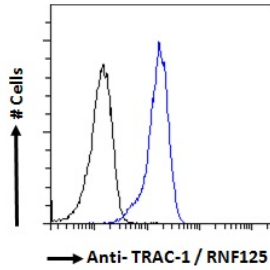
Images:



Anti-TRAC-1 Antibody (A121155) - Immunofluorescence analysis of paraformaldehyde fixed HeLa cells, permeabilized with 0.15% Triton. Primary incubation 1hr (10µg/ml) followed by Alexa Fluor 488 secondary antibody (2µg/ml), showing endoplasmic reticulum/Golgi and some nuclear staining. The nuclear stain is DAPI (blue). Negative control: Unimmunized goat IgG (10µg/ml) followed by Alexa Fluor 488 secondary antibody (2µg/ml).

Anti-TRAC-1 Antibody (A121171)

Images continued:



Anti-TRAC-1 Antibody (A121155) - Flow cytometric analysis of paraformaldehyde fixed HeLa cells (blue line), permeabilized with 0.5% Triton. Primary incubation 1hr (10 μ g/ml) followed by Alexa Fluor 488 secondary antibody (1 μ g/ml). IgG control: Unimmunized goat IgG (black line) followed by Alexa Fluor 488 secondary antibody.