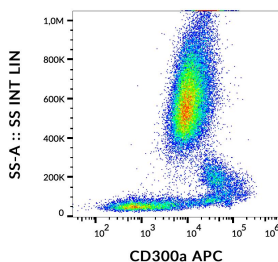


## Anti-CD300a Antibody [MEM-260] (APC) (A121902)

### Specifications:

Name:	Anti-CD300a Antibody [MEM-260] (APC)
Description:	Mouse monoclonal [MEM-260] antibody to CD300a (APC).
Specificity:	This antibody reacts with an extracellular epitope of CD300a, a 60 kDa leukocyte transmembrane glycoprotein expressed on human granulocytes, monocytes, neutrophils, NK cells, mast cells, dendritic cells, 25% of circulating T cells, and 15% of circulating B cells.
Applications:	Flow Cytometry
Recommended Dilutions:	Flow Cytometry: This reagent is designed for analysis of human blood cells using 10 $\mu$ l reagent / 100 $\mu$ l of whole blood or 10 <sup>6</sup> cells in a suspension.
Reactivity:	Human
Immunogen:	HPB human acute lymphoid leukemia cell line.
Host:	Mouse
Clonality:	Monoclonal
Clone ID:	MEM-260
Isotype:	IgG1
Conjugate:	APC
Purification:	This antibody is conjugated with APC under optimum conditions. The conjugate is purified by size-exclusion chromatography.
Product Form:	Liquid
Formulation:	Supplied in Phosphate Buffered Saline with 15 mM Sodium Azide.
Storage:	Store in the dark at 2-8°C. Do not freeze!
Disclaimer:	This product is for research use only. It is not intended for diagnostic or therapeutic use.

### Images:



Flow cytometric analysis of human peripheral blood cells with Anti-CD300a Antibody [MEM-260] (APC).