

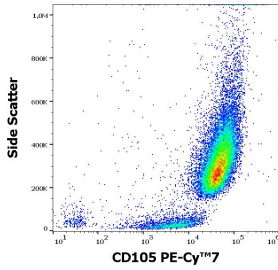
Anti-CD105 Antibody [MEM-226] (PE-Cyanine 7) (A121975)

Specifications:

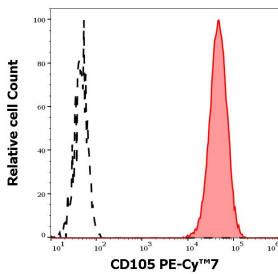
Name:	Anti-CD105 Antibody [MEM-226] (PE-Cyanine 7)
Description:	Mouse monoclonal [MEM-226] antibody to CD105 (PE-Cyanine 7).
Specificity:	This antibody reacts with an extracellular epitope of CD105, a 90 kDa type I homodimerizing membrane glycoprotein expressed on vascular endothelial cells (small and large vessels), activated monocytes and tissue macrophages, stromal cells of certain tissues including bone marrow, pre-B lymphocytes in fetal marrow, and erythroid precursors in fetal and adult bone marrow. It is also present on syncytiotrophoblast on placenta throughout pregnancy.
Applications:	Flow Cytometry
Recommended Dilutions:	Flow Cytometry: This reagent is designed for analysis of human blood cells using 4 μ l reagent / 100 μ l of whole blood or 10^6 cells in a suspension.
Reactivity:	Rat, Human
Immunogen:	Recombinant Vaccinia virus containing the human CD105 (L isoform) cDNA.
Host:	Mouse
Clonality:	Monoclonal
Clone ID:	MEM-226
Isotype:	IgG2a
Conjugate:	PE-Cyanine 7
Purification:	This antibody is conjugated with tandem dye PE-Cyanine 7 under optimum conditions. The conjugate is purified by size-exclusion chromatography.
Product Form:	Liquid
Formulation:	Supplied in Phosphate Buffered Saline with 15 mM Sodium Azide.
Storage:	Store in the dark at 2-8°C. Do not freeze!
Disclaimer:	This product is for research use only. It is not intended for diagnostic or therapeutic use.

Anti-CD105 Antibody [MEM-226] (PE-Cyanine 7) (A121975)

Images:



Flow cytometric analysis of HUVEC cell suspension stained with Anti-CD105 Antibody [MEM-226] (PE-Cyanine 7) (4 μ l reagent per milion cells in 100 μ l of cell suspension).



Separation of HUVEC cells (red-filled) from HEK-293 cells (black-dashed) in flow cytometry analysis using Anti-CD105 Antibody [MEM-226] (PE-Cyanine 7) (4 μ l reagent per milion cells in 100 μ l of cell suspension).