

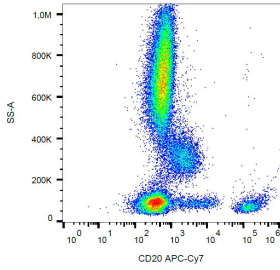
## Anti-CD20 Antibody [2H7] (APC-Cyanine 7) (A122088)

### Specifications:

|                        |   |
|------------------------|---|
| Name:                  | Anti-CD20 Antibody [2H7] (APC-Cyanine 7)  |
| Description:           | Mouse monoclonal [2H7] antibody to CD20 (APC-Cyanine 7).  |
| Specificity:           | This antibody recognizes an extracellular epitope on CD20, a 33-37 kDa non-glycosylated membrane receptor with four transmembrane domains, expressed on pre-B lymphocytes, resting and activated B cells (not plasma cells), follicular dendritic cells, and at low levels on peripheral blood T lymphocytes. |
| Applications:          | Flow Cytometry  |
| Recommended Dilutions: | Flow Cytometry: This reagent is designed for analysis of human blood cells using 4 µl reagent / 100 µl of whole blood or 10 <sup>6</sup> cells in a suspension.   |
| Reactivity:            | Human, Non-Human Primates   |
| Immunogen:             | Human tonsillar B cells.  |
| Host:                  | Mouse   |
| Clonality:             | Monoclonal  |
| Clone ID:              | 2H7   |
| Isotype:               | IgG2b   |
| Light Chains:          | kappa   |
| Conjugate:             | APC-Cyanine 7   |
| Purification:          | This antibody is conjugated with tandem dye APC-Cyanine 7 under optimum conditions. The conjugate is purified by size-exclusion chromatography.   |
| Product Form:          | Liquid  |
| Formulation:           | Supplied in Phosphate Buffered Saline with 15 mM Sodium Azide.  |
| Storage:               | Store in the dark at 2-8°C. Do not freeze!  |
| Disclaimer:            | This product is for research use only. It is not intended for diagnostic or therapeutic use.  |

## Anti-CD20 Antibody [2H7] (APC-Cyanine 7) (A122088)

Images:



Flow cytometric analysis of human peripheral blood with Anti-CD20 Antibody [2H7] (APC-Cyanine 7).