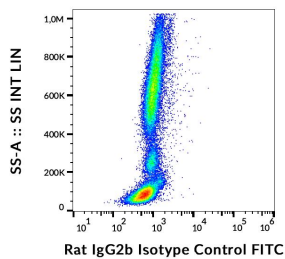


Rat IgG2b [RTG2B1-2] (FITC) (A122150)

Specifications:

Name:	Rat IgG2b [RTG2B1-2] (FITC)
Description:	Rat IgG2b [RTG2B1-2] (FITC) - Isotype Control
Specificity:	This antibody, also known as clone G2B-1-2 or KLH/G2B-1-2, detects specifically the hemocyanin of keyhole limpet and can be used as an isotype control antibody in other species.
Applications:	Flow Cytometry, Isotype Control
Recommended Dilutions:	Isotype Control: Use the same concentration of this isotype control as the working concentration of the primary antibody.
Host:	Rat
Clonality:	Monoclonal
Clone ID:	RTG2B1-2
Isotype:	IgG2b
Conjugate:	FITC
Purification:	This antibody is conjugated with FITC under optimum conditions. The conjugate is purified by size-exclusion chromatography.
Concentration:	1 mg/ml
Product Form:	Liquid
Formulation:	Supplied in Phosphate Buffered Saline with 15 mM Sodium Azide.
Storage:	Store in the dark at 2-8°C. Do not freeze!
Disclaimer:	This product is for research use only. It is not intended for diagnostic or therapeutic use.

Images:



Example of non-specific Rat IgG2b [RTG2B1-2] (FITC) signal on human peripheral blood, surface staining, 9µg/ml.