

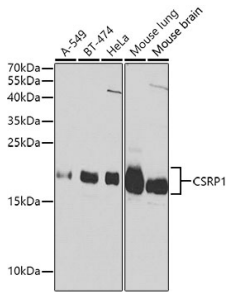
Anti-CSRP1 Antibody (A13028)

Specifications:

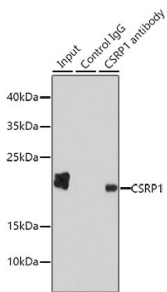
Name:	Anti-CSRP1 Antibody
Description:	Rabbit polyclonal antibody to CSRP1.
Applications:	WB, IP, RIP
Recommended Dilutions:	WB: 1:500-1:2,000, IP: 1:50-1:200, RIP: 1:20-1:50
Reactivity:	Human, Mouse
Immunogen:	Recombinant fusion protein containing a sequence corresponding to amino acids 1-193 of human CSRP1 (NP_004069.1).
Sequence:	MPNWGGGKKCGVCQKTVYFAEEVQCEGNSFHKSCFLCMVCKKNLDSTTVAVHGEEIYC KSCYGGKKGPKGYGYGQGAGTLSTDKGESLGIKHEEAPGHRPTTNPASKFAQKIGGS ERCPRCSQAVYAAEKVIGAGKSWHKACFRCAKCGKGLESTTLADKDGGEIYCKGCYAKN FGPKGFGFGQGAGALVHSE
Host:	Rabbit
Clonality:	Polyclonal
Isotype:	IgG
Conjugate:	Unconjugated
Purification:	Affinity purification.
Molecular Weight:	21 kDa
Product Form:	Liquid
Formulation:	Supplied in Phosphate Buffered Saline, pH 7.3, with 50% Glycerol and 0.02% Sodium Azide.
Storage:	Shipped at 4°C. Upon delivery aliquot and store at -20°C. Avoid freeze / thaw cycles.
Disclaimer:	This product is for research use only. It is not intended for diagnostic or therapeutic use.

Anti-CSRP1 Antibody (A13028)

Images:



Western blot analysis of extracts of various cell lines, using Anti-CSRP1 Antibody (A13028) at 1:1,000 dilution. The secondary antibody was Goat Anti-Rabbit IgG H&L Antibody (HRP) at 1:10,000 dilution. Lysates/proteins were present at 25 μ g per lane. The blocking buffer used was 3% non-fat dry milk in TBST. Detection was with a ECL Basic Kit.



Immunoprecipitation analysis of 200 μ g extracts of HepG2 cells using 1 μ g of Anti-CSRP1 Antibody (A13028). This Western blot was performed on the immunoprecipitate using Anti-CSRP1 Antibody (A13028) at a dilution of 1:1000.