

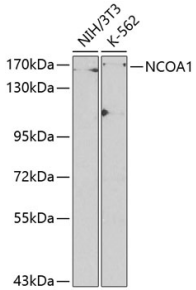
## Anti-KAT13A / SRC1 Antibody (A13275)

### Specifications:

Name:	Anti-KAT13A / SRC1 Antibody
Description:	Rabbit polyclonal antibody to KAT13A / SRC1.
Applications:	WB
Recommended Dilutions:	WB: 1:500-1:2,000
Reactivity:	Human, Mouse
Immunogen:	Recombinant fusion protein containing a sequence corresponding to amino acids 720-980 of human NCOA1 (NP_003734.3).
Sequence:	SVTGQVQGNSSIKLELDASKKKESKDHQLLRYLLDKDEKDLRSTPNLSLDDVKVKVEK KEQMDPCNTNPTPMTKPTPEEIKLEAQSQFTADLDQFDQLLPTLEKAAQLPGLCETDR MDGAVTSVTIKSEILPASLQSATARPTSRLNRLPELELEAIDNQFGQP GTGDQIPWTN NTVTAINQSKSEDQCISQLDELLCPPTTVEGRNDEKALLEQLVSFSGKDETELAEL DRALGIDKLVQGGGLDVLSERFPPQQATP
Host:	Rabbit
Clonality:	Polyclonal
Isotype:	IgG
Conjugate:	Unconjugated
Purification:	Affinity purification.
Molecular Weight:	157 kDa
Product Form:	Liquid
Formulation:	Supplied in Phosphate Buffered Saline, pH 7.3, with 50% Glycerol and 0.01% Thiomersal.
Storage:	Shipped at 4°C. Upon delivery aliquot and store at -20°C. Avoid freeze / thaw cycles.
Disclaimer:	This product is for research use only. It is not intended for diagnostic or therapeutic use.

## Anti-KAT13A / SRC1 Antibody (A13275)

### Images:



Western blot analysis of extracts of various cell lines, using Anti-KAT13A / SRC1 Antibody (A13275) at 1:500 dilution. The secondary antibody was Goat Anti-Rabbit IgG H&L Antibody (HRP) at 1:10,000 dilution. Lysates/proteins were present at 25 $\mu$ g per lane. The blocking buffer used was 3% non-fat dry milk in TBST.