

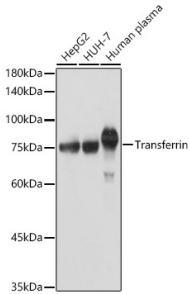
Anti-Transferrin Antibody (A13456)

Specifications:

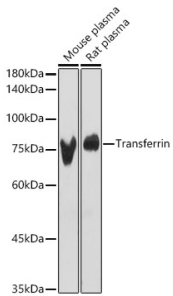
Name:	Anti-Transferrin Antibody
Description:	Rabbit polyclonal antibody to Transferrin.
Applications:	WB, ICC/IF
Recommended Dilutions:	WB: 1:1,000-1:5,000, ICC/IF: 1:50-1:200
Reactivity:	Human, Mouse, Rat
Immunogen:	Recombinant fusion protein containing a sequence corresponding to amino acids 355-698 of human Transferrin (NP_001054.2).
Sequence:	TDECKPVKWCALSHHERLKCDEWSVNSVKGIECVSAETTEDCIAKIMNGEADAMSLDG GFVYIAGKCGLVPVLAENYNKSDNCEDTPEAGYFAIAVVKKSASDLTWDNLKGGKKSCH TAVGRTAGWNIPMGLLYNKINHCRFDEFFSEGCAPGSKKDSSLCKLCMGSGNLNCEPN NKEGYGYTGAFRCLVEKGDVAFVKHQVTPQNTGGKNPDPWAKNLNEKDYELLCLDGT RKPVEEYANCHLARAPNHAVVTRKDKEACVHKILRQQQLFSGSNVTDCSGNFCLFRSE TKDLLFRDDTVCLAKLHDRNTYEKYLGEEYVKA VGNLRKCSTSSLLEACTFRRP
Host:	Rabbit
Clonality:	Polyclonal
Isotype:	IgG
Conjugate:	Unconjugated
Purification:	Affinity purification.
Molecular Weight:	77 kDa
Product Form:	Liquid
Formulation:	Supplied in Phosphate Buffered Saline, pH 7.3, with 50% Glycerol and 0.05% Proclin 300.
Storage:	Shipped at 4°C. Upon delivery aliquot and store at -20°C. Avoid freeze / thaw cycles.
Disclaimer:	This product is for research use only. It is not intended for diagnostic or therapeutic use.

Anti-Transferrin Antibody (A13456)

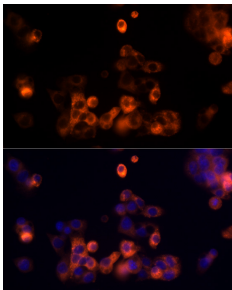
Images:



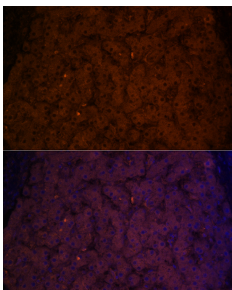
Western blot analysis of extracts of various cell lines, using Anti-Transferrin Antibody (A13456) at 1:1,000 dilution. The secondary antibody was Goat Anti-Rabbit IgG H&L Antibody (HRP) at 1:10,000 dilution. Lysates/proteins were present at 25 μ g per lane. The blocking buffer used was 3% non-fat dry milk in TBST. Detection was with a ECL Basic Kit. Exposure time: 1s.



Western blot analysis of extracts of various cell lines, using Anti-Transferrin Antibody (A13456) at 1:1,000 dilution. The secondary antibody was Goat Anti-Rabbit IgG H&L Antibody (HRP) at 1:10,000 dilution. Lysates/proteins were present at 25 μ g per lane. The blocking buffer used was 3% non-fat dry milk in TBST. Detection was with a ECL Basic Kit. Exposure time: 90s.



Immunofluorescence analysis of HepG2 cells using Anti-Transferrin Antibody (A13456) at a dilution of 1:50 (40x lens). DAPI was used to stain the cell nuclei (blue).



Immunofluorescence analysis of human liver cells using Anti-Transferrin Antibody (A13456) at a dilution of 1:50 (40x lens). DAPI was used to stain the cell nuclei (blue).