

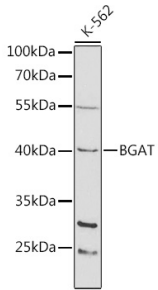
Anti-ABO Antibody (A13526)

Specifications:

Name:	Anti-ABO Antibody
Description:	Rabbit polyclonal antibody to ABO.
Applications:	WB, IHC
Recommended Dilutions:	WB: 1:500-1:2,000, IHC: 1:50-1:200
Reactivity:	Human, Mouse, Rat
Immunogen:	Recombinant fusion protein containing a sequence corresponding to amino acids 54-354 of human BGAT (NP_065202.2).
Sequence:	AVREPDHLQRVSLPRMVYPQPKVLTPCRKDVLVVTPWLAPIVWEGTFNIDILNEQFRL QNTTIGLTVFAIKKYVAFLKLFLETAEKHFVGHVHYYVFTDQPAAVPRVTLGTGRQ LSVLEVRAYKRWQDVSMRRMEMISDFCERRFLSEVDYLCVDVDMEFRDHVGVEILTP LFGTLHPGFYGGSSREAFTYERRPQSQAYIPKDEGDFYYLGGFFGGSVQEVQRLTRACH QAMMVDQANGIEAVWHDESHLNKYLLRHKPTKVLSPPEYLWDQQLLGWPAVLRKLRFTA VPKNHQAVRNP
Host:	Rabbit
Clonality:	Polyclonal
Isotype:	IgG
Conjugate:	Unconjugated
Purification:	Affinity purification.
Molecular Weight:	41 kDa
Product Form:	Liquid
Formulation:	Supplied in Phosphate Buffered Saline, pH 7.3, with 50% Glycerol and 0.02% Sodium Azide.
Storage:	Shipped at 4°C. Upon delivery aliquot and store at -20°C. Avoid freeze / thaw cycles.
Disclaimer:	This product is for research use only. It is not intended for diagnostic or therapeutic use.

Anti-ABO Antibody (A13526)

Images:



Western blot analysis of extracts of K-562 cells, using Anti-ABO Antibody (A13526) at 1:1,000 dilution. The secondary antibody was Goat Anti-Rabbit IgG H&L Antibody (HRP) at 1:10,000 dilution. Lysates/proteins were present at 25 μ g per lane. The blocking buffer used was 3% non-fat dry milk in TBST.