

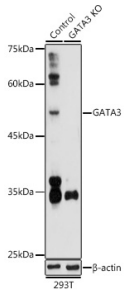
Anti-GATA3 Antibody (A13567)

Specifications:

Name:	Anti-GATA3 Antibody
Description:	Rabbit polyclonal antibody to GATA3.
Applications:	WB
Recommended Dilutions:	WB: 1:500-1:1,000
Reactivity:	Human, Mouse, Rat
Immunogen:	Recombinant fusion protein containing a sequence corresponding to amino acids 1-260 of human GATA3 (NP_002042.1).
Sequence:	MEVTADQPRWVSHHHPAVLNGQHPDTHHPGLSHSYMDAAQYPLPEEVDVLFNIDGQGN HVPPYYGNSVRATVQRYPPTHHGSQVCRPPLLHGSLPWLDGGKALGSHHTASPWNLS FSKTSIHHGSPGPLSVYPPASSSSLSGGHASPFLFTFPPTPPKDVSPDPSLSTPGSAG SARQDEKECLKYQVPLPDSMKLESSHSRGSMTALGGASSSTHHPITTYPPYVPEYSSG LFPPSSLLGGSPGTFGCKSRPKARSSTG
Host:	Rabbit
Clonality:	Polyclonal
Isotype:	IgG
Conjugate:	Unconjugated
Purification:	Affinity purification.
Molecular Weight:	48 kDa
Product Form:	Liquid
Formulation:	Supplied in Phosphate Buffered Saline, pH 7.3, with 50% Glycerol and 0.01% Thiomersal.
Storage:	Shipped at 4°C. Upon delivery aliquot and store at -20°C. Avoid freeze / thaw cycles.
Disclaimer:	This product is for research use only. It is not intended for diagnostic or therapeutic use.

Anti-GATA3 Antibody (A13567)

Images:



Western blot analysis of extracts from normal (control) and GATA3 knockout (KO) 293T cells, using Anti-GATA3 Antibody (A13567) at 1:1,000 dilution. The secondary antibody was Goat Anti-Rabbit IgG H&L Antibody (HRP) at 1:10,000 dilution. Lysates/proteins were present at 25µg per lane. The blocking buffer used was 3% non-fat dry milk in TBST. Detection was with a ECL Enhanced Kit (RM00021). Exposure time: 180s.