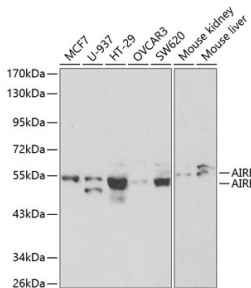


Anti-AIRE Antibody (A13643)

Specifications:

Name:	Anti-AIRE Antibody
Description:	Rabbit polyclonal antibody to AIRE.
Applications:	WB, ICC/IF
Recommended Dilutions:	WB: 1:500-1:2,000, ICC/IF: 1:50-1:200
Reactivity:	Human, Mouse, Rat
Immunogen:	A synthetic peptide corresponding to a sequence within amino acids 30-130 of human AIRE (NP_000374.1).
Sequence:	HALADHDVVPEDKFKQETLHLKEKEGCPQAFHALLSWLLTQDSTAILDFWRVLFKDYNL ERYGRLQPILDSFPKDVLDLSQPRKGRKPPAVPKALVPPRLPT
Host:	Rabbit
Clonality:	Polyclonal
Isotype:	IgG
Conjugate:	Unconjugated
Purification:	Affinity purification.
Molecular Weight:	55 kDa
Product Form:	Liquid
Formulation:	Supplied in Phosphate Buffered Saline, pH 7.3, with 50% Glycerol and 0.02% Sodium Azide.
Storage:	Shipped at 4°C. Upon delivery aliquot and store at -20°C. Avoid freeze / thaw cycles.
Disclaimer:	This product is for research use only. It is not intended for diagnostic or therapeutic use.

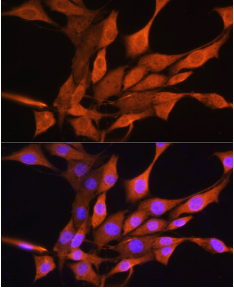
Images:



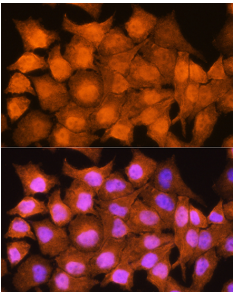
Western blot analysis of extracts of various cell lines, using Anti-AIRE Antibody (A13643) at 1:1,000 dilution. The secondary antibody was Goat Anti-Rabbit IgG H&L Antibody (HRP) at 1:10,000 dilution. Lysates/proteins were present at 25µg per lane. The blocking buffer used was 3% non-fat dry milk in TBST.

Anti-AIRE Antibody (A13643)

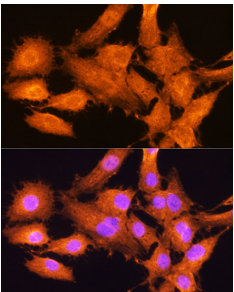
Images continued:



Immunofluorescence analysis of NIH/3T3 cells using Anti-AIRE Antibody (A13643) at a dilution of 1:100. DAPI was used to stain the cell nuclei (blue).



Immunofluorescence analysis of HeLa cells using Anti-AIRE Antibody (A13643) at a dilution of 1:100. DAPI was used to stain the cell nuclei (blue).



Immunofluorescence analysis of C6 cells using Anti-AIRE Antibody (A13643) at a dilution of 1:100. DAPI was used to stain the cell nuclei (blue).