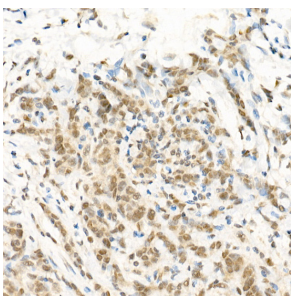


Anti-RGS2 Antibody (A13660)

Specifications:

Name:	Anti-RGS2 Antibody
Description:	Rabbit polyclonal antibody to RGS2.
Applications:	WB, IHC
Recommended Dilutions:	WB: 1:500-1:2,000, IHC: 1:50-1:200
Reactivity:	Human
Immunogen:	Recombinant fusion protein containing a sequence corresponding to amino acids 1-211 of human RGS2 (NP_002914.1).
Sequence:	<pre>MQSAMFLAVQHDCRPMDKSAGSGHKSEEKREKMKRLLKDWKTRLSYFLQNSSTPGKP KTGKSKQQAFIKPSPEEAQLWSEAFDELLASKYGLAAFRAFLKSEFCEENIEFWLAC EDFKKTKSPQKLSSKARKIYTDFIEKEAPKEINIDFQTKTLIAQNIQEATSGCFTTAQ KRVYSLMENNYSYPRFLESEFYQDLCKKPQITTEPHAT</pre>
Host:	Rabbit
Clonality:	Polyclonal
Isotype:	IgG
Conjugate:	Unconjugated
Purification:	Affinity purification.
Product Form:	Liquid
Formulation:	Supplied in Phosphate Buffered Saline, pH 7.3, with 50% Glycerol and 0.02% Sodium Azide.
Storage:	Shipped at 4°C. Upon delivery aliquot and store at -20°C. Avoid freeze / thaw cycles.
Disclaimer:	This product is for research use only. It is not intended for diagnostic or therapeutic use.

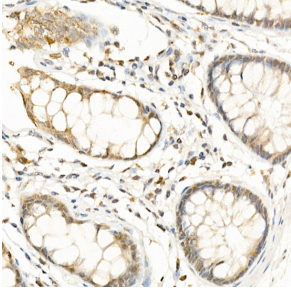
Images:



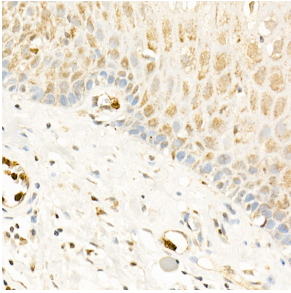
Immunohistochemistry analysis of paraffin-embedded human breast cancer tissue using Anti-RGS2 Antibody (A13660) at a dilution of 1:100 (40x lens). Perform high pressure antigen retrieval with 10 mM citrate buffer pH 6.0 before commencing with IHC staining protocol.

Anti-RGS2 Antibody (A13660)

Images continued:



Immunohistochemistry analysis of paraffin-embedded human colon tissue using Anti-RGS2 Antibody (A13660) at a dilution of 1:100 (40x lens). Perform high pressure antigen retrieval with 10 mM citrate buffer pH 6.0 before commencing with IHC staining protocol.



Immunohistochemistry analysis of paraffin-embedded human esophagus using Anti-RGS2 Antibody (A13660) at a dilution of 1:100 (40x lens). Perform high pressure antigen retrieval with 10 mM citrate buffer pH 6.0 before commencing with IHC staining protocol.