

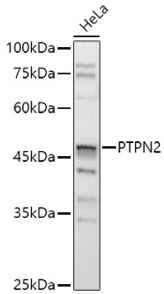
## Anti-TCPTP Antibody (A13672)

### Specifications:

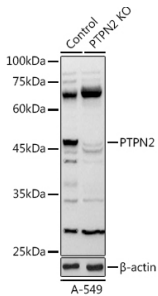
Name:	Anti-TCPTP Antibody
Description:	Rabbit polyclonal antibody to TCPTP.
Applications:	WB, ICC/IF
Recommended Dilutions:	WB: 1:500-1:1,000, ICC/IF: 1:50-1:200
Reactivity:	Human, Mouse, Rat
Immunogen:	Recombinant fusion protein containing a sequence corresponding to amino acids 1-353 of human PTPN2 (P17706).
Sequence:	MPTTIEREFEELDTQRRWQPLYLEIRNESHDYPHRVAKFPENRRNRNRYRDVSPYDHSR VKLQNAENDYINASLVDIEEAQRSYILTQGPLPNTCCHFWMVWQQKTKAVVMLNRIV EKESVKCAQYWPTDDQEMLFKETGFSVKLLSEVKSYYTVHLLQLENINSGETRTISH FHYTTWPDFGVPEPASFLNFLFKVRESGSLNPDHGPVVIHCSAGIGRSGTFSLVDTG LVLMEKGDDINIKQVLLNMRKYRMGLIQTPDQLRFSYMAIIEGAKCIKGDSSIQRWK ELSKEDLSPAFDHSPNKIMTEKYNGNRIGLEEEKLTGDRCTGLSSKMQDTMEENSESA LRKRI
Host:	Rabbit
Clonality:	Polyclonal
Isotype:	IgG
Conjugate:	Unconjugated
Purification:	Affinity purification.
Molecular Weight:	45 kDa
Product Form:	Liquid
Formulation:	Supplied in Phosphate Buffered Saline, pH 7.3, with 50% Glycerol and 0.01% Thiomersal.
Storage:	Shipped at 4°C. Upon delivery aliquot and store at -20°C. Avoid freeze / thaw cycles.
Disclaimer:	This product is for research use only. It is not intended for diagnostic or therapeutic use.

## Anti-TCPTP Antibody (A13672)

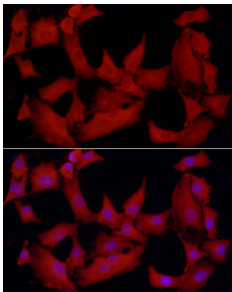
### Images:



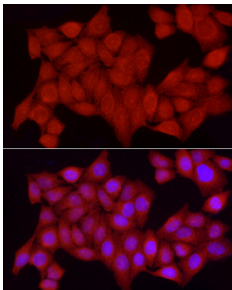
Western blot analysis of extracts of HeLa cells, using Anti-TCPTP Antibody (A13672) at 1:1,000 dilution. The secondary antibody was Goat Anti-Rabbit IgG H&L Antibody (HRP) at 1:10,000 dilution. Lysates/proteins were present at 25µg per lane. The blocking buffer used was 3% non-fat dry milk in TBST. Detection was with a ECL Basic Kit. Exposure time: 3s.



Western blot analysis of extracts from normal (control) and PTPN2 knockout (KO) A-549 cells, using Anti-TCPTP Antibody (A13672) at 1:1,000 dilution. The secondary antibody was Goat Anti-Rabbit IgG H&L Antibody (HRP) at 1:10,000 dilution. Lysates/proteins were present at 25µg per lane. The blocking buffer used was 3% non-fat dry milk in TBST. Detection was with a ECL Basic Kit. Exposure time: 3s.



Immunofluorescence analysis of A-549 cells using Anti-TCPTP Antibody (A13672) at a dilution of 1:200 (40x lens). DAPI was used to stain the cell nuclei (blue).



Immunofluorescence analysis of HeLa cells using Anti-TCPTP Antibody (A13672) at a dilution of 1:200 (40x lens). DAPI was used to stain the cell nuclei (blue).