

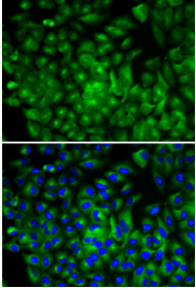
## Anti-ATG16L1 Antibody (A13716)

### Specifications:

Name:	Anti-ATG16L1 Antibody
Description:	Rabbit polyclonal antibody to ATG16L1.
Applications:	WB, IHC, ICC/IF
Recommended Dilutions:	WB: 1:500-1:2,000, IHC: 1:50-1:200, ICC/IF: 1:50-1:200
Reactivity:	Human, Mouse, Rat
Immunogen:	Recombinant fusion protein containing a sequence corresponding to amino acids 90-300 of human ATG16L1 (NP_110430.5).
Sequence:	IKHQEELTELHKKRGELAQVLIDLNNQMQRKDREMQMNEAKIAECLQTISDLETECLD LRTKLCDLERANQTLKDEYDALQITFTALEGKLRKTTEENQELVTRWMAEKAQEANRL NAENEKDSRRRQARLQKELAEAAKEPLPVEQDDIEVIVDETS DHTEETSPVRAISRA ATKRLSQPAGLLDSITNIFGRRSVSSFPVPQDNVDT
Host:	Rabbit
Clonality:	Polyclonal
Isotype:	IgG
Conjugate:	Unconjugated
Purification:	Affinity purification.
Molecular Weight:	66 kDa / 68 kDa
Product Form:	Liquid
Formulation:	Supplied in Phosphate Buffered Saline, pH 7.3, with 50% Glycerol and 0.02% Sodium Azide.
Storage:	Shipped at 4°C. Upon delivery aliquot and store at -20°C. Avoid freeze / thaw cycles.
Disclaimer:	This product is for research use only. It is not intended for diagnostic or therapeutic use.

## Anti-ATG16L1 Antibody (A13716)

Images:



Immunofluorescence analysis of A-549 cells using Anti-ATG16L1 Antibody (A13716). DAPI was used to stain the cell nuclei (blue).